



# THE INTIMATE SUITE

A REFINED ALLURE, EXOTIC DETAILS AND A DELICATE COLOUR PALETTE ARE THE SALIENT FEATURES OF **THE INTIMATE SUITE**, THE NEW HOME ENVIRONMENT OF ETRO HOME INTERIORS. THE SUITE COMPRISES A BEDROOM AREA, A LIVING SPACE AND AN OFFICE: AN INTIMATE AND COSY ENVIRONMENT WHERE ICONIC PIECES OF THE COLLECTION, DRESSED IN NEUTRAL SHADES, CELEBRATE THE NOMADIC SPIRIT OF ETRO IN A SOFTLY SOPHISTICATED VERSION.

THE IMAGINATIVE EXPRESSIVENESS OF THE ETRO WORLD IS TRANSLATED BY THE BRAND'S TYPICAL NARRATIVE PATTERNS INTO A NEW LANGUAGE OF LIGHTNESS AND FLUIDITY. THE TREE OF LIFE, ONE OF THE SYMBOLIC AND RECURRING ELEMENTS, APPEARS ON THE WALLPAPER, ALONG WITH PAISLEY IN ITS COUNTLESS INTERPRETATIONS.

THE PROPOSAL PRESENTS A MEDLEY OF SUGGESTIONS, STYLES AND CULTURES IMBUED IN A REFINED ATMOSPHERE, WHICH IS GENERATED BY THE **CALIBRATED MINGLING OF THE DELICATE SHADES OF THE UPHOLSTERY** – IN A COLOUR PALETTE RANGING FROM GREY TO BEIGE – **AND DARK-COLOURED WOOD**, SUCH AS WENGÉ-STAINED CARBALHO, WITH ITS ASSERTIVE CHARACTER AND ETHNIC TONES.







# TIMGAD BED

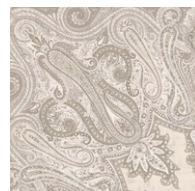
Protagonist of the sleeping area, Timgad is a scenographic bed whose name evokes the splendor of an ancient Algerian city, fairy-tale set of a story in which the exotic inspirations meet the tailoring, art and craftsmanship that have always characterized the brand ETRO Home Interiors. Featuring the presence of an important headboard in matt Smoke Grey dyed cane, the bed has two big movable doors equipped with a reading lamp in fabric, mirrors and shelves with storage compartments.



Fabric NOLI  
Col. 3 GREIGE  
Cat. A



Fabric NOLI  
Col. 4 IVORY  
Cat. A



Fabric LEROY  
Col. 2 GREIGE  
Cat. B

## E.TIM.312.ADX

### COMPOSITION

Bed with headboard in brushed Smoke Gray Vienna straw attached to the solid beech wood structure, turned and worked with a numeric control system, dyed matt wengé. Closure piping in wicker in same colour as Vienna straw. Back of headboard closed with panel of multilayer wood covered in linen cat. A Noli col. 3 Greige. Headboard cushions in variable thickness high density expansive polyurethane foam attached to the headboard structure with a clip system. Removable external upholstery in linen cat. A Noli col. 3 Greige with piping in linen cat. A Noli col. 4 Ivory. Roll cushions in variable thickness high density expansive polyurethane foam. Removable external upholstery in jacquard fabric cat. A Deccan col. 2 Champagne with same colour piping.

Optional quilted lightweight bedcover (200g/m<sup>2</sup>) in polyester fibre filling covered in jacquard fabric cat. A Deccan col. 2 Champagne. Bed frame in multilayer wood and variable thickness high density expansive polyurethane foam. Removable external upholstery in linen cat. A Noli col. 3 Greige. Base in multilayer wood finished with matt dark wengé dye. Side panels in printed fabric cat. B Leroy col. 2 Greige attached to the structure in solid beech wood, turned and worked with a numeric control system, finished with matt dark wengé dye. Closure piping in linen cat. A Noli col. 3 Greige. Customisable side panels with detachable accessory elements, attached to the structure through an interlocking system.

All of the upholstered parts are internally lined with resin coated polyester coupled with hypoallergenic white cotton canvas. Slatted base included. Queen sized mattress not included. Brass tag with certified "100% Made in Italy" serial number attached.

Available accessories include:

- Sconce reading lamp with shade covered in jacquard fabric cat. A Deccan col. 2 Champagne.
- Natural bevelled mirror on multilayer wood support finished with matt dark wengé dye.
- "Monkey" hanger in polished cast brass.
- Shelf with solid beech wood structure finished with matt dark wengé dye and tray in polished brass.



E.EHC.822.GMX

L 60 D 60 cm  
L 23 5/8 D 23 5/8 in



E.EHC.822.DMX

L 60 D 60 cm  
L 23 5/8 D 23 5/8 in



E.EHC.822.BMX

L 45 D 45 cm  
L 17 23/32 D 17 23/32 in



E.EHC.822.HMX

L 45 D 45 cm  
L 17 23/32 D 17 23/32 in



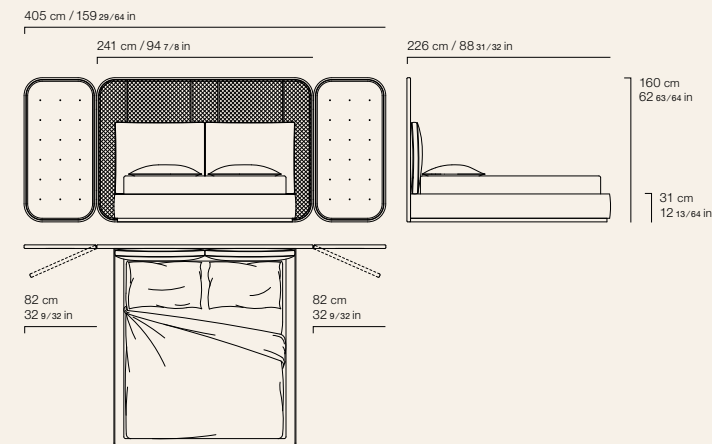
E.EHC.822.KMX

L 45 D 45 cm  
L 17 23/32 D 17 23/32 in



E.EHC.822.NMX

L 45 D 45 cm  
L 17 23/32 D 17 23/32 in



Monkey hanger  
44 cm  
17 21/64 in

Shelf  
44 cm  
17 21/64 in  
20 cm  
7 7/8 in

Mirror  
40 cm  
15 3/4 in  
40 cm  
15 3/4 in

Reading lamp  
30 cm  
11 13/16 in  
20 cm  
7 7/8 in  
15 cm  
5 29/32 in

## CARAL NIGHT TABLE

*Nomadic spirit, travel suggestions and natural inspirations. This night table with matt Smoke Grey dyed cane and paisley handles in polished brass is a mix of references and suggestions in perfect ETRO Home Interiors style.*

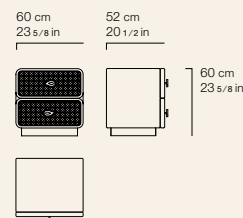


**E.CAR.321.AHX**

### COMPOSITION

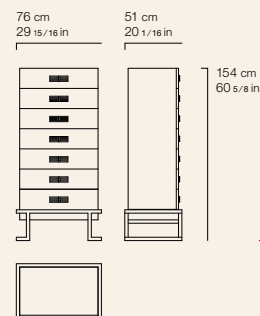
Night table with structure in curved multilayer wood covered with matt dark wengé dyed Carbalho veneer. Drawers in multilayer wood covered in microfibre. Front in brushed Smoke Grey dyed Vienna straw in a frame in solid beech wood, turned and worked with a numeric control system, finished with matt dark wengé dye. Closure piping in wicker in

same colour as Vienna straw. "Paisley" handles in polished cast brass. Back in multilayer wood covered in microfibre. Base in curved multilayer wood varnished bronze with hand-applied multilayer patina finishing. Brass tag with certified "100% Made in Italy" serial number attached.



# KOLKATA DRAWER UNIT

*Kolkata is an evocative line of furniture that recalls the shape of the ancient chests used centuries ago in the namesake Indian city. In this new variant, the chest of drawers is upholstered in a delicate greige shade and embellished with brass handles and decorative details.*

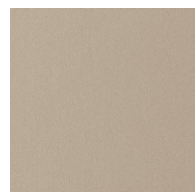


## E.KOL.332.AAI

### COMPOSITION

Drawer unit with base in varnished bronze iron with hand-applied multilayer patina finishing.  
Structure in multilayer wood covered in aniline leather cat. A Cuero in col. 2 Greige with decorative stitching.  
Drawers in multilayer wood covered in

microfibre. Front in multilayer wood covered in aniline leather cat. A Cuero in col. 2 Greige with decorative stitching.  
Double "E" handles in polished cast brass.  
Brass tag with certified "100% Made in Italy" serial number attached.



Leather CUERO  
Col. 2 GREIGE  
Cat. A

# WOODSTOCK BENCH

*"A Thousand and One Nights" atmosphere for the Woodstock bench. The base in matt dark wengé dyed wood with an ethnic flair is combined with the champagne-coloured fabric with a delicate ivory tone piping creating an elegant, sophisticated and eclectic set.*



Fabric DECCAN  
Col. 2 CHAMPAGNE  
Cat. A



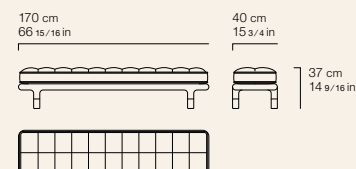
Fabric NOLI  
Col. 4 IVORY  
Cat. A

**E.WOO.561.ADX**

## COMPOSITION

Bench with structure in solid beech wood, turned and worked with a numeric control system, finished with semi-gloss dark wengé dye. Tips in polished brass. Under seat frame in iron with elastic straps that guarantee springiness. Seat in variable thickness high density expansive polyurethane foam, quilted

with buttons on the surface and covered with resin coated polyester coupled with hypoallergenic white cotton canvas. Removable external upholstery in jacquard fabric cat. A Deccan col. 2 Champagne. Mattress style piping in linen cat. A Noli col. 4 Ivory. Brass tag with certified "100% Made in Italy" serial number attached.

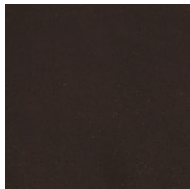


# SAMARCANDA POUF

*A piece of furniture imbued with ethnic suggestions and exotic inspirations, the Samarcanda pouf has a polished brass base and is upholstered in velvet and Greyton fabric in a new tone-on-tone colour palette in the shades of brown.*



Fabric GREYTON  
Col. 3 BROWN  
Cat. B



Velvet VENEZIA  
Col. 17 MOKA  
Cat. A

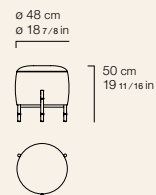


**E.SAM.222.BEX**

## COMPOSITION

Pouf with structure in multilayer wood and variable thickness high density expansive polyurethane foam covered with resin coated polyester coupled with hypoallergenic white cotton canvas. Base in polished brass with feet shaped like bamboo canes obtained through

handcrafted hot working metal process. Seat upholstered in velvet cat. A Venezia col. 17 Moka with same colour piping. Side upholstery in jacquard fabric cat. B Greyton col. 3 Brown. Brass tag with certified "100% Made in Italy" serial number attached.



# AKBAR DESK

*Institutional tones and rigorous lines for the first desk of ETRO Home Interiors. Protagonist of the office area, Akbar is enriched by the presence of archetypical elements such as the iconic fabric with paisley design, representative of ETRO leather goods, which upholsters drawers and storage compartments.*

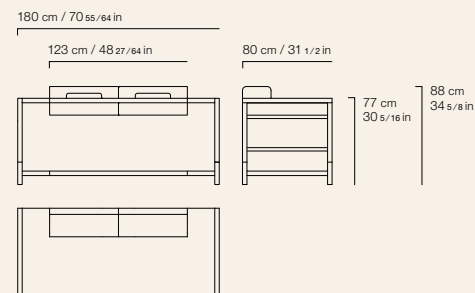


**E.AKB.411.AAX**

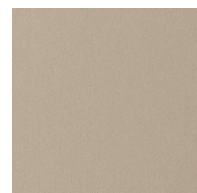
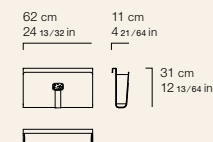
## COMPOSITION

Desk with structure in solid beech wood finished with matt dark wengé dye with feet and side rails in aluminium varnished bronze with multi-layer hand-applied patina finishing. Desktop in multilayer wood covered with aniline leather cat. A Cuero col. 2 Greige with decorative stitching. Drawers in multilayer wood completely covered in microfibre. Front panel and closure on back panel in multilayer wood in coated fabric cat. B Arnica col. 19 Cuoio. Storage compartments on top in solid

beech wood finished with semi-gloss dark wengé dye. Internal compartments in multilayer wood covered in microfibre and coated fabric cat. B Arnica col. 19 Cuoio. Opening front panel in curved multilayer wood covered in coated fabric cat. B Arnica col. 19 Cuoio. Optional detachable side bag in foldable metal covered in coated fabric cat. B Arnica col. 19 Cuoio with central application in leather cat. A Cuir col. 2 Chestnut and brass Pegasus buckle. Brass tag with certified "100% Made in Italy" serial number attached.



## Side bag



Leather CUERO  
Col. 2 GREIGE  
Cat. A



Coated fabric ARNICA  
Col. 19 CUOIO  
Cat. B

# HAMAR CHAIR

*In the Hamar chair, the ethnic and natural inspiration of the Vienna straw is declined in a new shade of gray, in line with the soft and refined mood of the collection. The African suggestions are found in the matt dark wengé dyed wood structure and in the polished brass rings, reminiscent of the jewels of African tribes.*

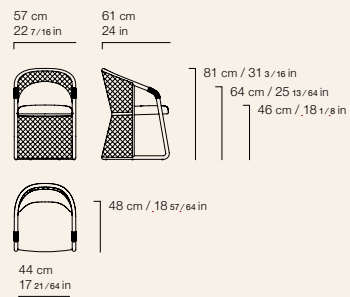


## E.HAM.131.ADX

### COMPOSITION

Chair with structure in solid beech wood, turned and worked with a numeric control system, finished with matt dark wengé dye. Brushed Smoke Grey Vienna straw attached to the structure. Closure piping in wicker in same colour as Vienna straw. Rings ornament of fixed on armrests composed of two pieces fitted together in polished cast brass. Seat in multilayer wood and variable thickness high density expansive

polyurethane foam. External upholstery in devoré velvet cat. A Flag col. 3 Taupe. Back cushion in variable thickness high density expansive polyurethane foam. Removable external upholstery in devoré velvet cat. A Flag col. 3 Taupe. All of the upholstered parts are internally lined with resin coated polyester coupled with hypoallergenic white cotton canvas. Brass tag with certified "100% Made in Italy" serial number attached.



Fabric FLAG  
Col. 3 TAUPE  
Cat. A

# WOODSTOCK DAYBED

*Perfect for separating two rooms or to create a comfortable chill-out corner in the living room or bedroom, Woodstock daybed, with its atmosphere imbued with Arabian suggestions, is upholstered with velvets in contrasting colour and matching silk tassels.*



**E.WOO.225.ADX**

## COMPOSITION

Daybed with structure in solid beech wood, turned and worked with a numeric control system, finished with semi-gloss dark wengé dye. Tips in polished brass.

Under seat frame in iron with elastic straps that guarantee springiness.

Seat in variable thickness high density expansive polyurethane foam quilted with surface buttons. External upholstery in velvet cat. A Venezia col. 18 Smoke.

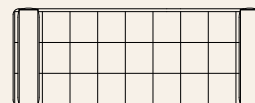
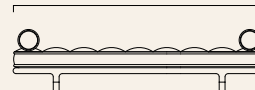
Mattress style piping in velvet cat. A Venezia col. 17 Moka.

Roll cushions in variable thickness high density expansive polyurethane foam with

internal structure in metal attached to the under seat frame with a screw and bolt system. External upholstery in velvet cat. A Venezia col. 17 Moka. Contrasting piping in velvet cat. A Venezia col. 18 Smoke.

Double layer decorative tassels in silk in colours matching with upholstery fabric. All of the upholstered parts are internally lined with resin coated polyester coupled with hypoallergenic white cotton canvas. With prior disassembly of the roll cushions, all sofa parts have removable covers. Brass tag with certified "100% Made in Italy" serial number attached.

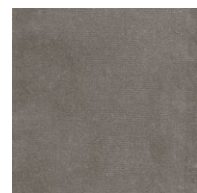
237 cm  
93 5/16 in



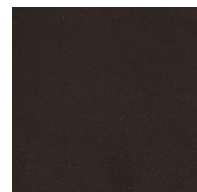
90 cm  
35 7/16 in



58 cm / 22 13/16 in  
41 cm / 16 1/8 in

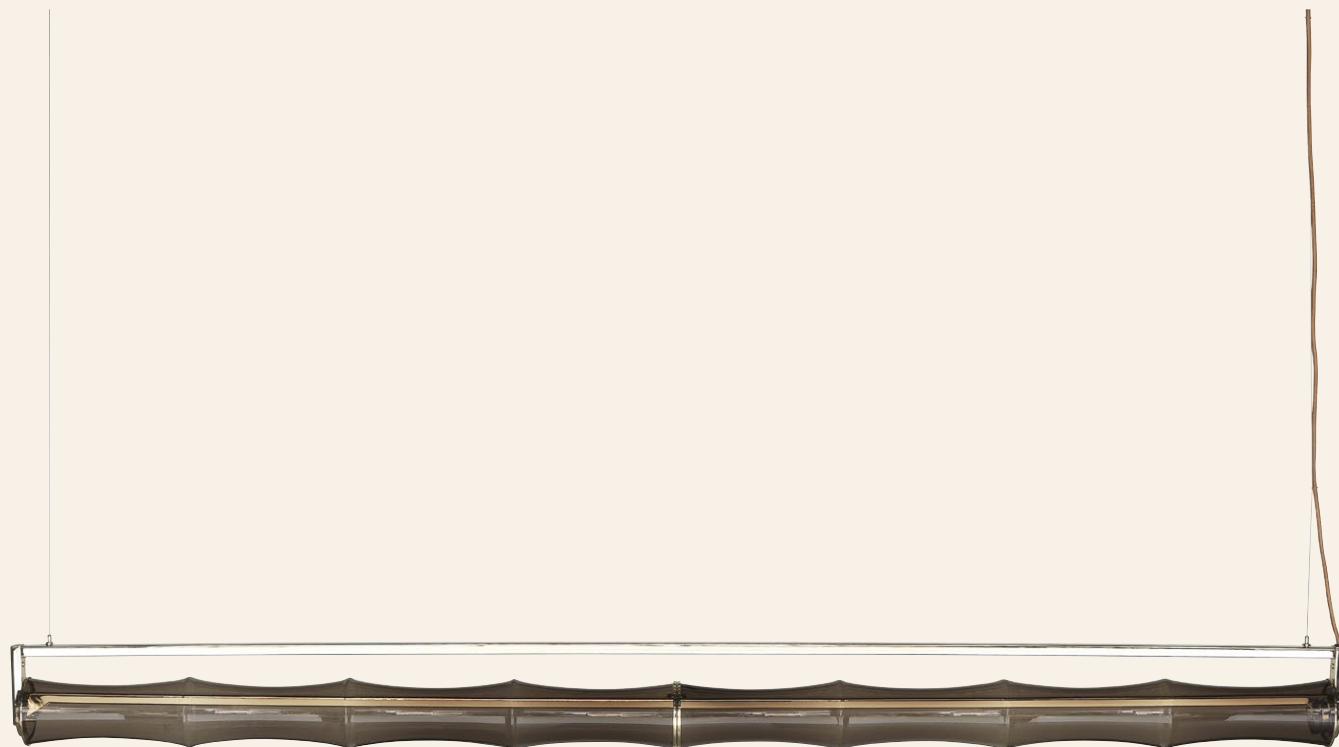


Velvet VENEZIA  
Col. 18 SMOKE  
Cat. A



Velvet VENEZIA  
Col. 17 MOKA  
Cat. A

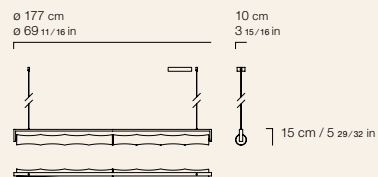
# KYOTO SUSPENSION LAMP



**E.KYO.611.CMX**

## COMPOSITION

Suspension lamp system with strip LED 17,3W - 24V - 29W - 3300lm - 3000K. Shades shaped like bamboo canes in transparent bronze glass on a metal structure with glossy gold finishing. Cables in gold fabric. Ceiling mounted power supply in metal box with glossy gold finishing. Suspension from ceiling in steel cables at the end of the lamp. Brass tag with certified "100% Made in Italy" serial number attached.



# KYOTO FLOOR LAMP



**E.KYO.621.AMX**

## COMPOSITION

Floor lamp with 3-light system, all with strip LED 17,3W - 24V - 77W - 8661lm - 3000K.  
Shades shaped like bamboo canes in transparent bronze glass on a metal structure with glossy gold finishing.  
Cables in gold fabric.  
Brass tag with certified "100% Made in Italy" serial number attached.

ø 35 cm  
ø 13 3/4 in



180 cm  
70 9/16 in



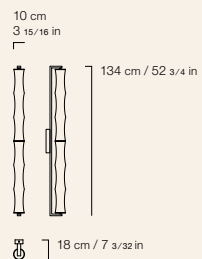
# KYOTO WALL LAMP



**E.KYO.641.AMX**

## COMPOSITION

Wall lamp system with strip LED 17,3W - 24V - 22W - 2475lm - 3000K.  
Shades shaped like bamboo canes in transparent bronze glass on a metal structure with glossy gold finishing.  
Wall mounted power supply in metal box with glossy gold finishing.  
Brass tag with certified "100% Made in Italy" serial number attached.



# WOODSTOCK "MOUNTAIN" 4-SEATER SOFA

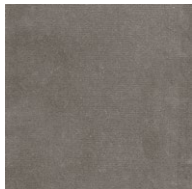
*In the Woodstock sofa, the ethnic-inspired mattress conformation recalls the atmosphere of "A thousand and one nights", steeped in Ottoman and North African traditions. Dressed in the iconic fabric with "Mountain" print in a new colour variant, with a beige base and dark motifs reminiscent of gypsy designs, the sofa is characterized by a base in dark wengé dyed wood with tips and details in polished brass*



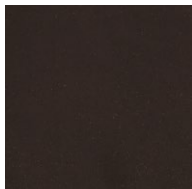
Printed fabric  
**MOUNTAIN**  
Col. 3 BASE BEIGE  
Cat. A



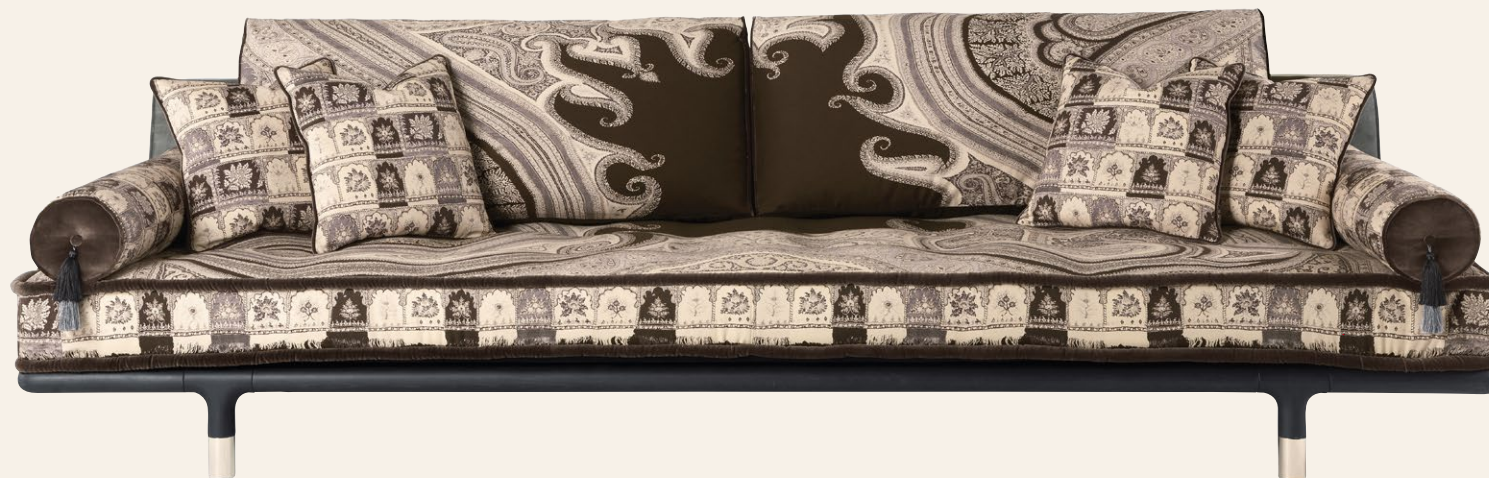
Printed fabric  
**MOUNTAIN ROLL**  
Col. 3 BASE BEIGE  
Cat. A



Velvet **VENEZIA**  
Col. 18 SMOKE  
Cat. A



Velvet **VENEZIA**  
Col. 17 MOKA  
Cat. A



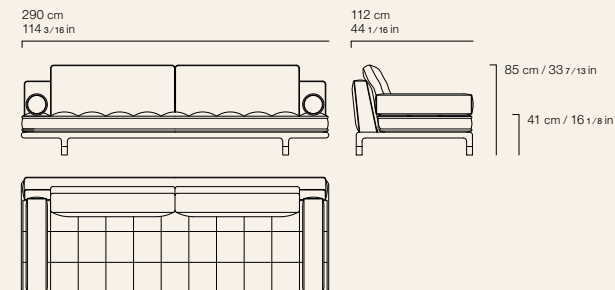
**E.WOO.211.ADX**

## COMPOSITION

Sofa with base in solid beech wood, turned and worked with a numeric control system, finished with matt dark wengé dye. Tips in polished brass. Under seat frame in iron with elastic straps that guarantee springiness. Seat in variable thickness high density expansive polyurethane foam quilted with surface buttons. External upholstery in printed fabric cat. A Mountain col. 3 Base Beige. Mattress style piping in velvet cat. A Venezia col. 17 Moka. Roll cushions in variable thickness high density expansive polyurethane foam with

internal structure in metal attached to the under seat frame with a screw and bolt system. External upholstery in printed fabric cat. A Mountain Roll col. 3 Base Beige. Piping and edge with button in velvet cat. A Venezia col. 17 Moka. Double layer decorative tassels in silk in colours matching with upholstery fabric. Back with structure in multilayer wood covered with variable thickness high density expansive polyurethane foam attached to the base of the underseat frame. External upholstery in velvet cat. A Venezia col. 18 Smoke with same colour piping.

Back cushions in goose down. External upholstery in printed fabric cat. A Mountain col. 3 Base Beige. Piping and edge in velvet cat. A Venezia col. 17 Moka. All of the upholstered parts are internally lined with resin coated polyester coupled with hypoallergenic white cotton canvas. With prior disassembly of the roll cushions, all sofa parts except for the back have removable covers. Brass tag with certified "100% Made in Italy" serial number attached.

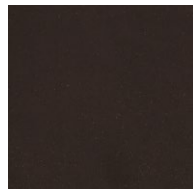


# MASAI ARMCHAIR

*An iconic piece of the ETRO Home Interiors line, the Masai armchair represents a tribute to Africa, a continent recalled both in the shape and in the detail of the bronzed metal rings, similar to the jewelry of the African populations. In this new version it is made of Greyton linen, with tone-on-tone paisley in shades of brown.*



Fabric GREYTON  
Col. 3 BROWN  
Cat. B



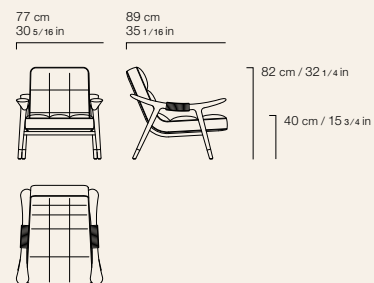
Velvet VENEZIA  
Col. 17 MOKA  
Cat. A

**E.MAA.221.AEX**

## COMPOSITION

Armchair with structure in solid beech wood, turned and worked with a numeric control system, finished with matt dark wengé dye. Feet in polished brass. Rings ornament fixed on armrests composed of two pieces fitted together in polished cast brass. Seat in curved multilayer wood and variable thickness high density expansive

polyurethane foam covered with resin coated polyester coupled with hypoallergenic white cotton canvas. Main external upholstery in jacquard fabric cat. B Greyton col. 3 Brown. Lateral bands and piping in velvet cat. A Venezia col. 17 Moka. Brass tag with certified "100% Made in Italy" serial number attached.



## CARAL ARMCHAIR

*Nomadic spirit and travel suggestions for the Caral armchair. The back frame is realized in matt dark wengé dyed wood with matt Smoke Grey dyed cane, a new and delicate shade of gray while the upholstery is in Bukhara fabric, whose neutral tones contrast with the darker ethnic theme of the typical Persian "Suzani" pattern.*



### E.CAR.221.ADX

#### COMPOSITION

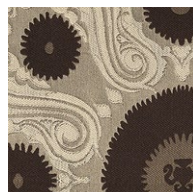
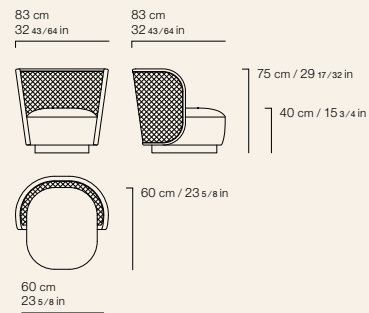
Armchair with backrest in brushed matt Smoke Grey Vienna straw in a frame in solid beech wood, turned and worked with a numeric control system, finished with matt dark wengé dye. Closure piping in wicker in same colour as Vienna straw.

Seat in multilayer wood and variable thickness high density expansive polyurethane foam. External upholstery in jacquard fabric cat. A Bukhara col. 2 Smoke and contrasting piping in velvet cat. A Venezia col. 17 Moka.

Goose feather back cushion. Removable upholstery in velvet cat. A Venezia col. 17 Moka with same colour piping.

All of the upholstered parts are internally lined with resin coated polyester coupled with hypoallergenic white cotton canvas.

Base in curved multilayer wood varnished bronze with hand-applied multilayer patina finishing. Brass tag with certified "100% Made in Italy" serial number attached.



Fabric BUKHARA  
Col. 2 SMOKE  
Cat. A

# KOLKATA DRESSING TABLE

Latest addition to the Kolkata line, sharing the same design of the base, the new dressing table is a decorative piece of furniture with a mirror with golden nails on the borders and greige leather upholstery.

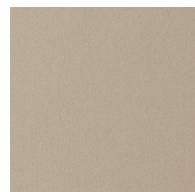
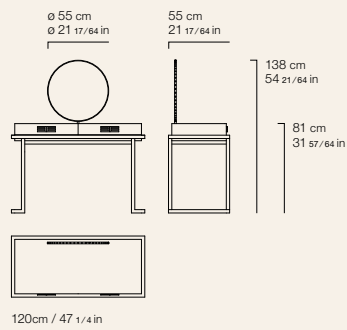


## E.KOL.341.BAI

### COMPOSITION

Dressing table with base in varnished bronze iron with hand-applied multilayer patina finishing.  
Top in multilayer wood covered in aniline leather cat. A Cuero in col. 2 Greige with decorative stitching.  
Drawers in multilayer wood covered in microfibre. Front in multilayer wood covered in aniline leather cat. A Cuero in col. 2 Greige with decorative stitching.

Double "E" handles in polished cast brass.  
Circular mirror on base of multilayer wood covered in aniline leather cat. A Cuero in col. 2 Greige and bordered with bronzed nailheads around the circumference. Fixed to the top with a rotating rod that guarantees flexible orientation.  
Brass tag with certified "100% Made in Italy" serial number attached.



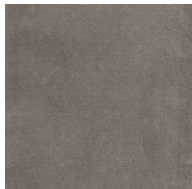
Leather CUERO  
Col. 2 GREIGE  
Cat. A

## MERIAM POUF

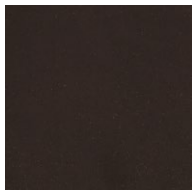
*A decorative piece of furniture with exotic suggestions, Meriam pouf is presented with a new Bukhara fabric upholstery with neutral tones and contrasting ethnic designs. The pouf is embellished with golden decorative studs on the bottom and a fluted gold lacquered base.*



Fabric BUKHARA  
Col. 2 SMOKE  
Cat. A



Velvet VENEZIA  
Col. 18 SMOKE  
Cat. A



Velvet VENEZIA  
Col. 17 MOKA  
Cat. A



**E.MEI.222.ADV**

### COMPOSITION

Pouf with multilayer wood and variable thickness high density expansive polyurethane foam covered with resin coated polyester coupled with hypoallergenic white cotton canvas. External seat cover in cat. A Bukhara jacquard fabric col. 2 Smoke. External side cover in cat. A Venezia velvet col. 18

Smoke. Piping in cat. A Venezia velvet col. 17 Moka. Gold colour decorative studs on bottom. Base in grooved MDF with numeric control system with and gold lacquer finishing. Brass tag with certified "100% Made in Italy" serial number attached.

ø 50 cm  
ø 19 11/16 in



45 cm  
17 23/32 in



## RENÉ STANDING MIRROR

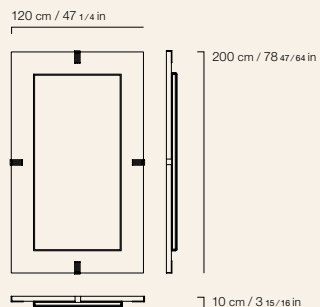
*René is an elegant mirror upholstered in fabric with paisley design. The unprecedented combination between the warmth of the fabrics and the refinement of the details in bronzed brass contributes to express the eclectic and multifaceted spirit of the brand.*



**E.RE2.512.AEX**

### COMPOSITION

Structure in multilayer wood with back covered in logo print canvas.  
External cover in coated fabric cat. B Arnica col. 19 Cuoio with detail in varnished bronze cast brass with hand-applied multilayer patina finishing.  
Natural bevelled mirror, at the centre.  
Brass tag with certified "100% Made in Italy" serial number attached.



Fabric ARNICA  
Col. 19 CUOIO  
Cat. B



# TIMGAD SCREEN

From the name that evokes the splendor of an ancient Algerian city, to the fabrics that tell wonderful intertwining of places and stories, the Timgad screen is a piece of furniture full of inspirations. The panels have dark wengé-stained wooden frames, with Vienna straw in shades of gray on the sides, with Leroy gray fabric in the middle. The screen is equipped with a mirror and embellished with polished brass details.



**E.TIM.551.AEX**

## COMPOSITION

Screen with side panels in Vienna straw from the ETRO Home Interiors collection attached to the solid beech wood structure, turned and worked with a numeric control system, finished with matt dark wengé dye. Closure piping in wicker in same colour as Vienna straw. Central panel in printed fabric cat. B Leroy col. 2 Greige and frame in linen in cat. A Noli col. 3 Greige attached to the structure in solid beech wood, turned and worked with a numeric control system, finished with matt dark wengé dye. Closure piping in linen cat. A Noli col. 3 Greige. Back of central panel customisable with

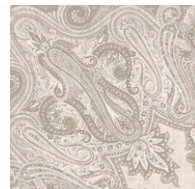
detachable accessory elements, attached to the structure through an interlocking system. Brass tag with certified "100% Made in Italy" serial number attached.

Available accessories include:

- Natural bevelled mirror on dark brown dyed multilayer wood support finished with matt dark wengé dye.
- "Monkey" hanger in polished cast brass.
- Shelf with solid beech wood structure finished with matt dark wengé dye and tray in polished brass.

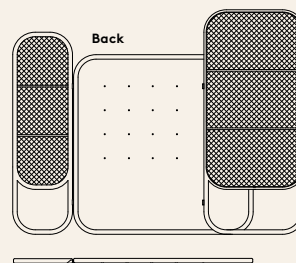
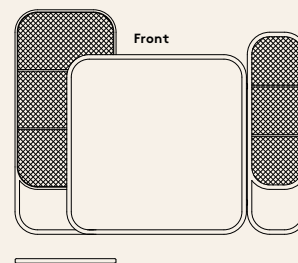


Fabric NOLI  
Col. 3 GREIGE  
Cat. A



Fabric LEROY  
Col. 2 GREIGE  
Cat. B

265 cm / 104 21/64 in



200 cm  
78 47/64 in

10 cm  
3 15/16 in

95 cm  
37 13/32 in

Monkey hanger



Mirror

40 cm  
15 3/4 in



40 cm  
15 3/4 in

Shelf

44 cm  
17 21/64 in



20 cm  
7 7/8 in

# SAMARCANDA CENTRAL TABLE

*Aesthetics, functionality and elegance come together in the Samarcanda coffee table. This evocative piece of furniture features an ethnic- inspired top in matt dark wengé dyed Carbalho wood and a polished brass base made up of an intertwining of bamboo canes, a natural element that is transformed into a precious material, lighting up to the environment.*



**E.SAM.231.AGX**

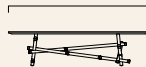
## COMPOSITION

Central table with base in polished brass with feet shaped like bamboo canes obtained through handcrafted hot working metal process.

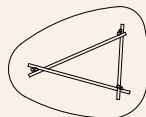
Top in multilayer wood covered with matt dark wengé dyed Carbalho veneer fixed to the base.

Brass tag with certified "100% Made in Italy" serial number attached.

125 cm / 49 7/32 in



30 cm / 11 13/16 in



100 cm / 39 3/8 in

# SAMARCANDA SIDE TABLE

*Aesthetics, functionality and elegance come together in the Samarcanda side table. This evocative piece of furniture features an elegant grey onyx top and a polished brass base made up of an intertwining of bamboo canes, a natural element that is transformed into a precious material, lighting up to the environment.*



**E.SAM.232.AXX**

## COMPOSITION

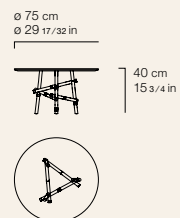
Side table with base in polished brass with feet shaped like bamboo canes obtained through handcrafted hot working metal process.  
Top in polished onyx cat. B Grey Onyx fixed to the base.  
Brass tag with certified "100% Made in Italy" serial number attached.



**E.SAM.232.AKX**

## COMPOSITION

Side table with base in polished brass with feet shaped like bamboo canes obtained through handcrafted hot working metal process.  
Top in polished marble cat. A Eramosa (vein cut) fixed to the base.  
Brass tag with certified "100% Made in Italy" serial number attached.



# SAMARCANDA SIDE TABLE

*Aesthetics, functionality and elegance come together in the Samarcanda side table. This evocative piece of furniture features an elegant grey onyx top and a polished brass base made up of an intertwining of bamboo canes, a natural element that is transformed into a precious material, lighting up to the environment.*



**E.SAM.232.BXX**

## COMPOSITION

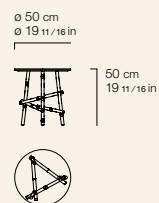
Side table with base in polished brass with feet shaped like bamboo canes obtained through handcrafted hot working metal process.  
Top in polished onyx cat. B Grey Onyx fixed to the base.  
Brass tag with certified "100% Made in Italy" serial number attached.



**E.SAM.232.BKX**

## COMPOSITION

Side table with base in polished brass with feet shaped like bamboo canes obtained through handcrafted hot working metal process.  
Top in polished marble cat. A Eramosa (vein cut) fixed to the base.  
Brass tag with certified "100% Made in Italy" serial number attached.



# CHAGALL CHANDELIER



**E.CHA.611.BMX**

## COMPOSITION

Lamp with 3 LED E27 light system.  
Lampshades in transparent bronze blown glass with arabesque patterns.  
Ceiling rose and metallic parts with glossy gold finishing.  
Cables in bordeaux fabric.  
Brass tag with certified "100% Made in Italy" serial number attached.

60 cm  
23 5/8 in



70 cm  
27 5/16 in



POWDER



LILAC



**E.PAP.591.AMX** | **E.PAP.591.BMX**

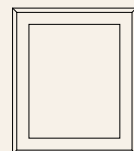
POWDER

LILAC

**COMPOSITION**

Floral print motif inspired by vintage “papier peint” on jacquard paper.  
Passe-partout in ivory cardboard.  
Frame in solid wood with antique gold finishing and transparent closure in Crilex (synthetic glass) guaranteeing low weight and unbreakability.  
Brass tag with certified “100% Made in Italy” serial number attached.

106 cm  
41 47/64 in



126 cm  
49 39/64 in

# VARANASI RUG

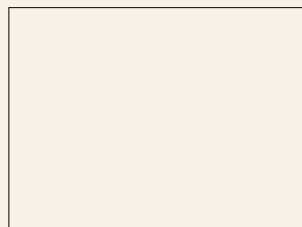


**E.VAR.571.CMX**

## COMPOSITION

Rug in tufted cut pile with nylon yarn whipping. Pattern with Etro floral motif.

400 cm / 157 31/64 in



300 cm / 118 7/64 in

ETRO HOME INTERIORS  
An exclusive collection by Jumbo Group



Via Montesolaro 14b  
22063 Cantù (CO)  
Italy

+39 031 70757

[info@jumbogroup.it](mailto:info@jumbogroup.it)  
[etrohomeinteriors.jumbogroup.it](http://etrohomeinteriors.jumbogroup.it)