

LIVING SOLUTIONS

THE INTIMATE COLLECTION

THE INTIMATE COLLECTION BY ETRO HOME INTERIORS REVEALS THE MOST INTIMATE SOUL OF THE LINE, THROUGH A PROPOSAL WITH AN ELEGANT ALLURE. A REFINED SPACE, WITH A WARM AND WELCOMING SPIRIT, IN WHICH THE BOHEMIAN AESTHETICS OF THE ETRO WORLD IGNITE NEW VIBRATIONS.

THE THREE LIVING ENVIRONMENTS - **THE INTIMATE LIVING, THE INTIMATE SUITE AND THE INTIMATE DINING** - PRESENT A MEDLEY OF SUGGESTIONS, STYLES AND CULTURES IMBUED IN A REFINED ATMOSPHERE. AN INTIMATE AND COSY ENVIRONMENT WHERE ICONIC PIECES OF THE COLLECTION, DRESSED IN SOFT SHADES, CELEBRATE THE NOMADIC SPIRIT OF ETRO IN A GENTLY SOPHISTICATED VERSION.

WHITE, BEIGE, GREIGE AND CHAMPAGNE: THE NEUTRAL PALETTE LENDS A DELICATE CHARM TO THE FURNISHINGS, WHILE EXOTIC ACCENTS FROM ETHNIC INSPIRATION GIVE LIFE TO A MIX OF ATMOSPHERES THAT RECALL FARAWAY LANDS.



















THE INTIMATE LIVING



MADRAS SOFA

Classic, soft and elegant lines for the Madras sofa, upholstered with Leroy fabric, featuring a typical cashmere design and presented in a new colour: a warm and refined gray-beige shade. Enhanced by the leather belt, a contrasting decorative element that underlines the harmony of the shapes, the sofa expresses the brand's most institutional character through details such as the buckle in soft brass with ETRO logo.



E.EHC.822.DMX

L 60 D 60 cm
L 23 5/8 D 23 5/8 in



E.EHC.821.BMX

L 45 D 45 cm
L 17 23/32 D 17 23/32 in



E.EHC.822.EMX

L 60 D 60 cm
L 23 5/8 D 23 5/8 in



E.EHC.822.KMX

L 45 D 45 cm
L 17 23/32 D 17 23/32 in



E.EHC.822.NMX

L 45 D 45 cm
L 17 23/32 D 17 23/32 in

E.MAD.211.AEX

3-seater sofa

E.MAD.211.BEX

2-seater sofa

COMPOSITION

3-seater sofa with multilayer wood covered in variable thickness high density expansive polyurethane foam covered with resin coated polyester coupled with hypoallergenic white cotton canvas. External cover in cat. B Leroy printed fabric col. 2 Greige.

Under seat frame internally attached with elastic straps that guarantee springiness. Seat cushions in variable thickness high density expansive polyurethane foam covered with resin coated polyester coupled with hypoallergenic white cotton canvas. External cover in cat. B Leroy

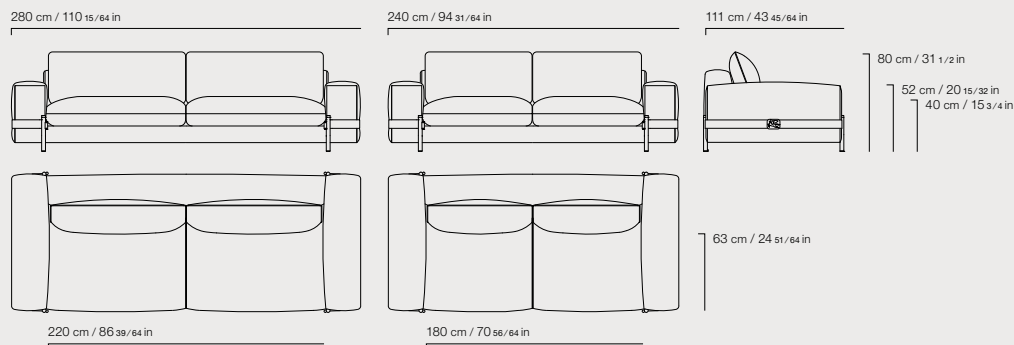
printed fabric col. 2 Greige. Back cushion in goose down covered in white 100% cotton featherproof fabric. External cover in cat. B Leroy printed fabric col. 2 Greige. Belt on external side of armrests in cat. A Cuir leather col. 2 Chestnut with visible stitching an Pegasus buckle in brass, looped around the feet and blocked at the end with a cylinder of polished brass. Feet in polished brass.

All parts of the sofa have removable covers except for the back and armrests. Brass tag with certified "100% Made in Italy" serial number attached.

Leather **CUIR**
col. 2 CHESTNUT
cat. A



Printed fabric **LEROY**
col. 2 GREIGE
cat. B



MADRAS SOFA

Classic, soft and elegant lines for the Madras sofa, upholstered with velvet in a soft cream shade, in line with the new interpretation that reveals ETRO Home Interiors' most elegant and delicate facet. Enhanced by the leather belt, a contrasting decorative element that underlines the harmony of the shapes, the sofa expresses the brand's most institutional character through details such as the buckle in soft brass with ETRO logo and the geometric pattern that plays on the repetition of the E letter.



E.EHC.822.DMX

L 60 D 60 cm
L 23 5/8 D 23 5/8 in



E.EHC.821.KMX

L 45 D 45 cm
L 17 23/32 D 17 23/32 in



E.EHC.822.JMX

L 45 D 45 cm
L 17 23/32 D 17 23/32 in



E.EHC.822.HMX

L 45 D 45 cm
L 17 23/32 D 17 23/32 in



E.EHC.822.KMX

L 45 D 45 cm
L 17 23/32 D 17 23/32 in



E.EHC.822.BMX

L 45 D 45 cm
L 17 23/32 D 17 23/32 in

E.MAD.211.ADX

3-seater sofa

E.MAD.211.BDX

2-seater sofa

COMPOSITION

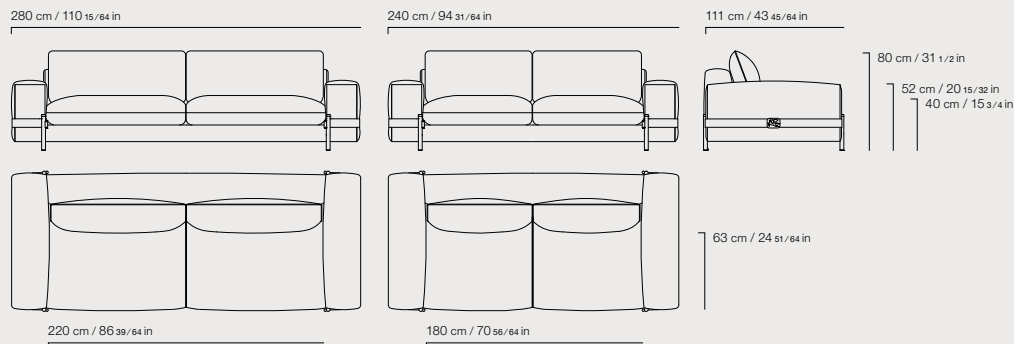
3-seater sofa with multilayer wood covered in variable thickness high density expansive polyurethane foam covered with resin coated polyester coupled with hypoallergenic white cotton canvas. External cover in cat. A velvet Flag col. 6 Cream. Under seat frame internally attached with elastic straps that guarantee springiness. Seat cushions in variable thickness high density expansive polyurethane foam covered with resin coated polyester coupled with hypoallergenic white cotton canvas. External cover in cat. A velvet Flag

col. 6 Cream. Back cushion in goose down covered in white 100% cotton featherproof fabric. External cover in cat. A Flag velvet colour 6 Cream. Belt on external side of armrests in cat. A leather Cuir in col. 2 Chestnut with visible stitching and a Pegasus buckle in brass, looped around the feet and blocked at the end with a cylinder of polished brass. Feet in polished brass. All parts of the sofa have removable covers except for the back and armrests. Brass tag with certified "100% Made in Italy" serial number attached.

Leather CUIR
col. 2 CHESTNUT
cat. A



Velvet FLAG
col. 6 CREAM
cat. A



MADRAS ARMCHAIR

Madras is an elegant and sophisticated armchair, characterized by soft and harmonious lines, emphasized by the upholstery velvet in a soft cream shade that reveals ETRO Home Interiors' most delicate facet. The leather belt is the contrasting decorative element that underlines the harmony of the shapes, while the buckle with ETRO logo, in brass like the tips that add a note of shine to the whole, signs and seals the quality of the armchair.



E.EHC.821.BMX

L 45 D 45 cm
L 17 23/32 D 17 23/32 in

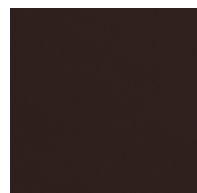
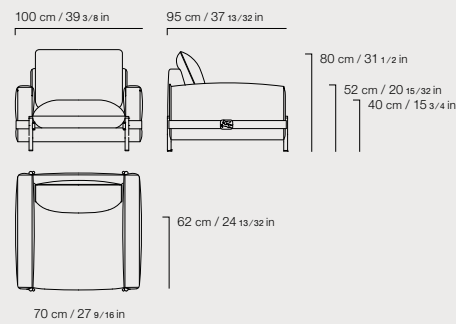


E.MAD.221.ADX

COMPOSITION

Armchair with multilayer wood structure and variable thickness high density expansive polyurethane foam covered with resin coated polyester coupled with hypoallergenic white cotton canvas. External cover in cat. A Flag velvet col. 6 Cream. Under seat frame internally attached with elastic straps that guarantee springiness. Seat cushion variable thickness high density expansive polyurethane foam covered with resin coated polyester coupled with hypoallergenic white cotton canvas. External cover in cat. A Flag velvet

col. 6 Cream. Back cushion in goose down covered in white 100% cotton featherproof fabric. External cover in cat. A Flag velvet col. 6 Cream. Belt on external side of armrests in cat. A Cuir leather in col. 2 Chestnut with visible stitching an Pegasus buckle in brass, looped around the feet and blocked at the end with a cylinder of polished brass. Feet in polished brass. All parts of the sofa have removable covers except for the back and armrests. Brass tag with certified "100% Made in Italy" serial number attached.



Leather **CUIR**
col. 2 CHESTNUT
cat. A



Velvet **FLAG**
col. 6 CREAM
cat. A

MADRAS ARMCHAIR

Madras is an elegant and sophisticated armchair, characterized by soft and harmonious lines, emphasized by the upholstery with Leroy fabric, featuring a typical cashmere design and presented in a new colour: a warm and refined gray-beige shade. The leather belt is the contrasting decorative element that emphasizes the harmony of the shapes, while the buckle with ETRO logo, in brass like the tips that add a note of shine to the whole, signs and seals the quality of the armchair.



E.EHC.822.CMX

L 45 D 45 cm
L 17 23/32 D 17 23/32 in

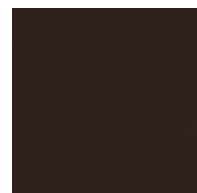
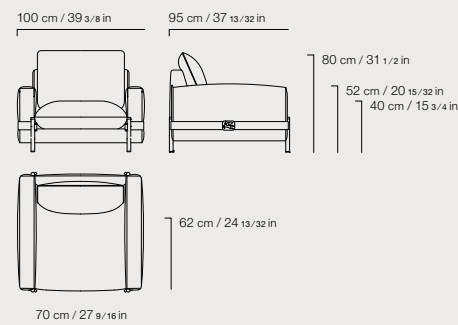


E.MAD.221.AEX

COMPOSITION

Armchair with multilayer wood structure and variable thickness high density expansive polyurethane foam covered with resin coated polyester coupled with hypoallergenic white cotton canvas. External cover in cat. B printed fabric Leroy col. 2 Greige. Under seat frame internally attached with elastic straps that guarantee springiness. Seat cushion variable thickness high density expansive polyurethane foam covered with resin coated polyester coupled with hypoallergenic white cotton canvas. External cover in cat. B printed

fabric Leroy col. 2 Greige. Back cushion in goose down covered in white 100% cotton featherproof fabric. External cover in cat. B printed fabric Leroy col. 2 Greige. Belt on external side of armrests in cat. A leather Cuir col. 2 Chestnut with visible stitching and a Pegasus buckle in brass, looped around the feet and blocked at the end with a cylinder of polished brass. Feet in polished brass. All parts of the sofa have removable covers except for the back and armrests. Brass tag with certified "100% Made in Italy" serial number attached.



Leather **CUIR**
col. 2 CHESTNUT
cat. A



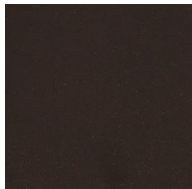
Printed fabric **LEROY**
col. 2 GREIGE
cat. B

SHAH ARMCHAIR

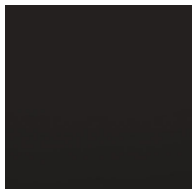
A welcoming and evocative armchair that celebrates ETRO Home Interiors' eclectic soul. The ethnic inspiration, already present in the name that refers to the kings of the Persian tradition, is found in the cushion resting on the seat, recalling the Ottoman poufs, and in the essential lines of the dark wood structure. The institutional character can be found in the detail of the Pegasus, the winged horse, historical symbol of the brand, applied on the back. The silk tassels on the seat cushions add a classic twist, confirming the versatile personality of the armchair.



Jacquard fabric
GREYTON col. 3 BROWN
cat. B



Velvet VENEZIA
col. 17 MOKA
cat. A



MATT DARK WENGÉ
DYED WOOD

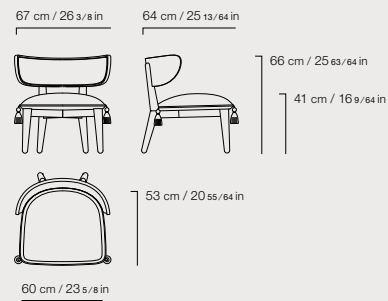


E.SHH.228.AEX

COMPOSITION

Chair with structure in solid beechwood, turned and worked with a numeric control system, matte dark wengé dyed finishing. Decorative Pegasus in laser cut brass laminate attached to the rear of the back rest. Seat in multilayer wood and variable thickness high density expansive polyurethane foam covered with

resin coated polyester coupled with hypoallergenic white cotton canvas. External cover in cat. B Greyton jacquard fabric col. 3 Brown and piping in cat. A Venezia velvet col. 17 Moka. Decorative tassels in silk in colours matching upholstery fabric. Brass tag with certified "100% Made in Italy" serial number attached.

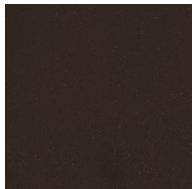


SHAH ARMCHAIR

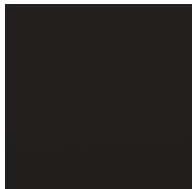
A welcoming and evocative armchair that celebrates ETRO Home Interiors' eclectic soul. The ethnic inspiration, already present in the name that refers to the kings of the Persian tradition, is found in the cushion resting on the seat, recalling the Ottoman poufs, in the essential lines of the dark wood structure and in the Bukhara fabric upholstery, with tribal decorative embroidery, presented this year in a new colour variant. The institutional character can be found in the detail of the Pegasus, the winged horse, historical symbol of the brand, applied on the back. The silk tassels on the seat cushions add a classic twist, confirming the versatile personality of the armchair.



Jacquard fabric
BUKHARA col. 2 SMOKE
cat. A



Velvet VENEZIA
col. 17 MOKA
cat. A



MATT DARK WENGÉ
DYED WOOD



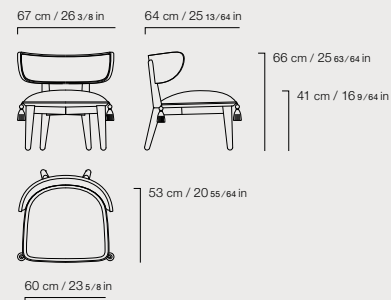
E.SHH.228.ADX

COMPOSITION

Armchair with structure in solid beech wood, turned and worked with a numeric control system, matt dark wengé dyed finishing. Decorative Pegasus in laser cut brass laminate attached to the rear of the back rest.

Seat in multilayer wood and variable thickness high density expansive polyurethane foam covered with

resin coated polyester coupled with hypoallergenic white cotton canvas. External cover in cat. A jacquard fabric Bukhara col. 2 Smoke and piping in cat. A velvet Venezia col. 17 Moka. Decorative tassels in silk in colours matching upholstery fabric. Brass tag with certified "100% Made in Italy" serial number attached.



AMBAR CENTRAL TABLE

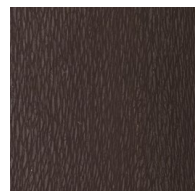
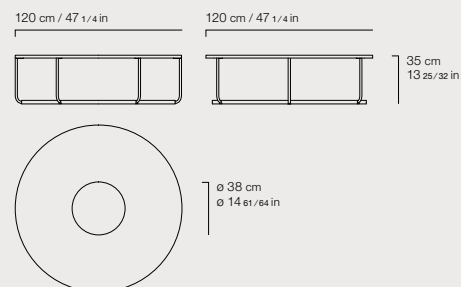
Ethnic accents and African references for the Ambar central table, whose structure consisting of base and top in precious Carbalho wood evokes the typical African percussion. The decorative mirror in the center of the top adds a luminous note, as well as the thin structure in polished brass, which contrasts with the materiality of the wood making the whole lighter and elegant.



E.AMB.231.DGJ

COMPOSITION

Central table with base in polished brass.
Top in multilayer wood attached to the base and covered in matt dark wengé dyed Carbalho essence.
Circular element at the centre of the tabletop ø 38 cm in natural mirror.
Brass tag with certified "100% Made in Italy" serial number attached.



MATT DARK WENGÉ
DYED CARBALHO
VENEERED

AMBAR SIDE TABLE

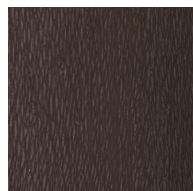
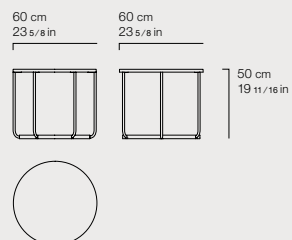
Ethnic accents and African references for the Ambar side table, whose structure consisting of a base and top in precious Carbalho wood evokes the typical African percussion. The thin structure in polished brass contrasts with the materiality of the wood adding a luminous note and making the whole lighter and elegant.



E.AMB.232.DGJ

COMPOSITION

Side table with base in polished brass.
Top in multilayer wood attached to the base and covered in matt dark wengé dyed Carbalho essence.
Brass tag with certified "100% Made in Italy" serial number attached.



**MATT DARK WENGÉ
DYED CARBALHO
VENEERED**

AMBAR CONSOLE

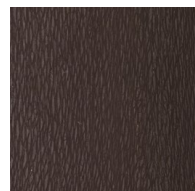
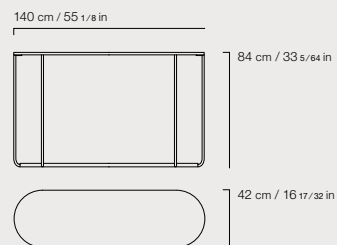
Ethnic accents and African references for the Ambar console, whose structure consisting of a base and top in precious Carbalho wood evokes the typical African percussion. The thin structure in polished brass contrasts with the materiality of the wood adding a luminous note and making the whole lighter and elegant.



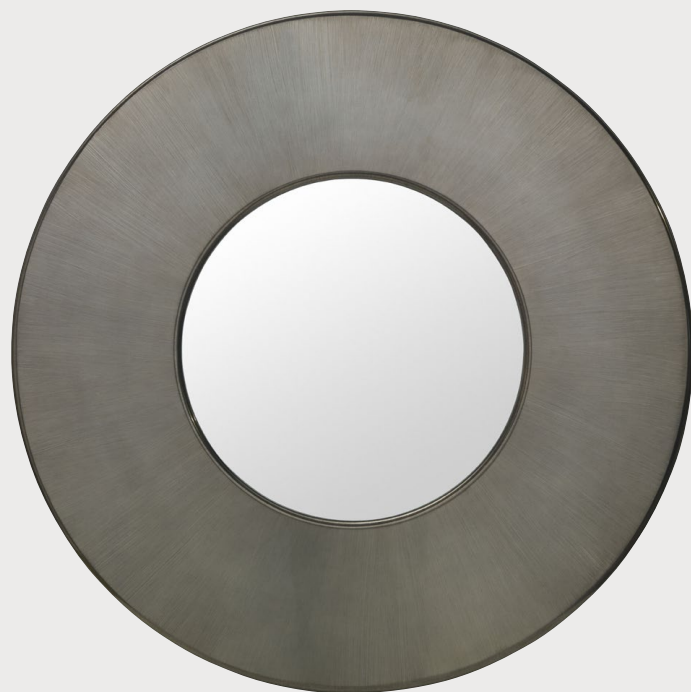
E.AMB.521.AGJ

COMPOSITION

Console table with base in polished brass.
Top in multilayer wood attached to the base and covered in matt dark wengé dyed Carbalho essence.
Brass tag with certified "100% Made in Italy" serial number attached.



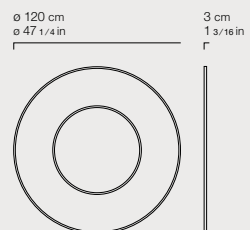
MATT DARK WENGÉ
DYED CARBALHO
VENEERED



E.RIC.511.AMX

COMPOSITION

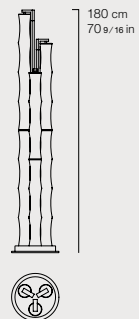
Mirror with structure in MDF worked with numeric control system and finished in gold liquid metal lacquered (varnished with multilayer hand applied patina finishing). Natural mirror in the middle. Brass tag with certified "100% Made in Italy" serial number attached.



KYOTO FLOOR LAMP



ø 35 cm
ø 13 3/4 in



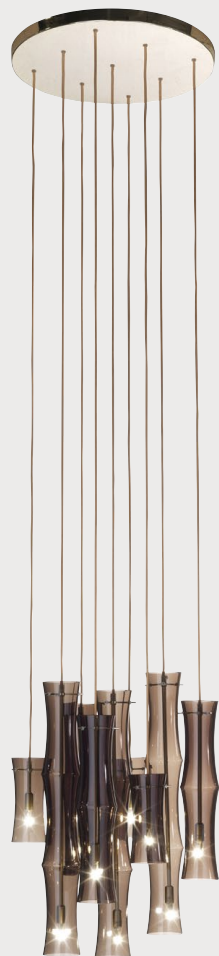
E.KYO.621.AMX

COMPOSITION

Floor lamp with 3-light system, all with strip LED 17,3W - 24V - 77W - 8661lm - 3000K. Shades shaped like bamboo canes in transparent bronze glass on a metal structure with glossy gold finishing. Cables in gold fabric. Brass tag with certified "100% Made in Italy" serial number attached.



KYOTO CHANDELIER



E.KYO.611.BMX

COMPOSITION

Chandelier with 9-light system, all with 3,5W LED 2700K.

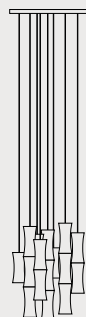
Shades shaped like bamboo canes in transparent bronze glass.

Cables in gold fabric.

Metal ceiling rose in glossy gold finishing.

Brass tag with certified "100% Made in Italy" serial number attached.

ø 52 cm
ø 20 15/32 in



65 cm
25 19/32 in



VARANASI RUG

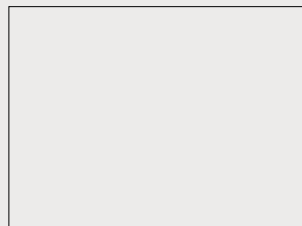


E.VAR.571.AMX

COMPOSITION

Rug in hand-tufted wool and bamboo silk
with ETRO floral pattern.

400 cm / 157 3/4 in



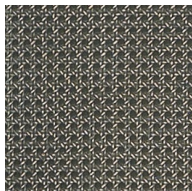
300 cm / 118 7/8 in

THE INTIMATE SUITE



TIMGAD BED

Protagonist of the sleeping area, Timgad is a scenographic bed whose name evokes the splendor of an ancient Algerian city, fairy-tale set of a story in which the exotic inspirations meet the tailoring, art and craftsmanship that have always characterized the brand ETRO Home Interiors. Featuring the presence of an important headboard in matt Smoke Grey dyed cane, the bed has two big movable doors equipped with a reading lamp in fabric, mirrors and shelves with storage compartments.



BRUSHED SMOKE GREY
DYED VIENNA STRAW
ON DARK WENGÉ DYED
SOLID WOOD



Linen NOLI
col. 3 GREIGE
cat. A



Linen NOLI
col. 4 IVORY
cat. A



Printed fabric LEROY
col. 2 GREIGE
cat. B

E.TIM.312.ADX

Mattress 180 x 200 cm

COMPOSITION

Bed with headboard in brushed Smoke Grey Vienna straw attached to the solid beech wood structure, turned and worked with a numeric control system, finished with matt dark wengé dye. Closure piping in wicker in same colour as Vienna straw. Back of headboard closed with panel of multilayer wood covered in linen cat. A Noli col. 3 Greige. Headboard cushions in variable thickness high density expansive polyurethane foam attached to the headboard structure with a clip system. Removable external upholstery in linen cat. A Noli col. 3 Greige with piping in linen cat. A Noli col. 4 Ivory. Roll cushions in variable thickness high density expansive polyurethane foam. Removable external upholstery in jacquard fabric cat. A Deccan col. 2 Champagne with same colour piping.

E.TIM.312.BDX

Mattress 200 x 200 cm

Optional quilted lightweight bedcover (200 g/m²) in polyester fibre filling covered in jacquard fabric cat. A Deccan col. 2 Champagne. Bed frame in multilayer wood and variable thickness high density expansive polyurethane foam. Removable external upholstery in linen cat. A Noli col. 3 Greige. Base in multilayer wood finished with matt dark wengé dye. Side panels in printed fabric cat. B Leroy col. 2 Greige attached to the structure in solid beech wood, turned and worked with a numeric control system, finished with matt dark wengé dye. Closure piping in linen cat. A Noli col. 3 Greige. Customisable side panels with detachable accessory elements, attached to the structure through an interlocking system.

All of the upholstered parts are internally lined with resin coated polyester coupled with hypoallergenic white cotton canvas. Slatted base included. Queen sized mattress not included. Brass tag with certified "100% Made in Italy" serial number attached.

Available accessories include:

- Sconce reading lamp with shade covered in jacquard fabric cat. A Deccan col. 2 Champagne.
- Natural bevelled mirror on multilayer wood support finished with matt dark wengé dye.
- "Monkey" hanger in polished cast brass.
- Shelf with solid beech wood structure finished with matt dark wengé dye and tray in polished brass.



E.EHC.822.GMX

L 60 D 60 cm
L 23 5/8 D 23 5/8 in



E.EHC.822.DMX

L 60 D 60 cm
L 23 5/8 D 23 5/8 in



E.EHC.822.BMX

L 45 D 45 cm
L 17 23/32 D 17 23/32 in



E.EHC.822.HMX

L 45 D 45 cm
L 17 23/32 D 17 23/32 in



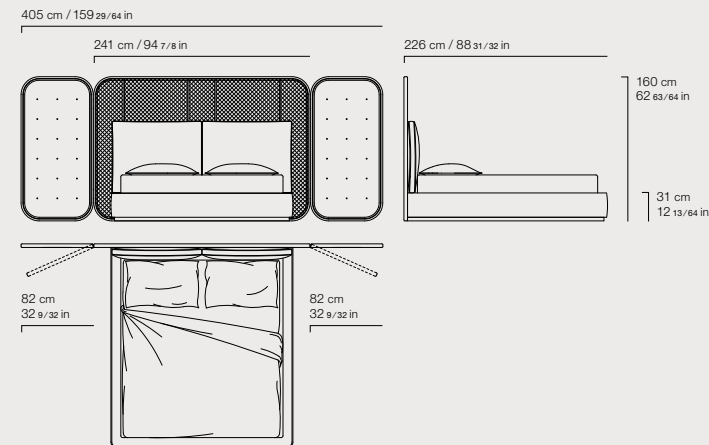
E.EHC.822.KMX

L 45 D 45 cm
L 17 23/32 D 17 23/32 in



E.EHC.822.NMX

L 45 D 45 cm
L 17 23/32 D 17 23/32 in



Monkey hanger
44 cm
17 21/64 in

Shelf
44 cm
17 21/64 in
20 cm
7 7/8 in

Mirror
40 cm
15 3/4 in
40 cm
15 3/4 in

Sconce
30 cm
11 13/16 in
20 cm
7 7/8 in
15 cm
5 29/32 in

CEYLON BED

Ceylon is an evocative bed that recalls exotic atmospheres and remote lands. The curved outwards headboard reminds of the furnishings of the colonial tradition and is upholstered with the new Selva fabric, featuring a naturalistic print with intricate fragments of Oriental jungles. The contrasting base in solid beech wood underlines and enhances the seductive lines of the bed, enriched by two roll cushions with the same upholstery. The Ceylon line also includes sofa, armchair and pouf.



E.EHC.821.GMX

L 45 D 45 cm
L 17 23/32 D 17 23/32 in



Nubuck leather NUUK
col. 6 FROST
cat. A



Printed fabric SELVA
col. 1 CHAMPAGNE
cat. A



MATT DARK WENGÉ
DYED WOOD

E.CEY.312.ADV

Mattress 180 x 200 cm

COMPOSITION

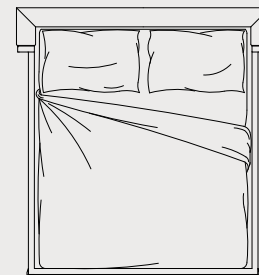
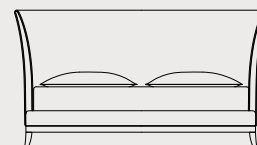
Bed with headboard in curved multilayer wood and variable thickness high density expansive polyurethane foam. Upholstery in cat. A Selva printed fabric col. 1 Champagne. External frame in solid beech wood finished with semi-gloss or matt dark wengé dye. Roll cushions in variable thickness high density expansive polyurethane foam. Removable upholstery in cat. A Selva printed fabric col. 1 Champagne. Optional quilted lightweight bedcover (200 g/m²) in polyester fibre filling covered in cat. A Selva printed fabric col. 1 Champagne.

E.CEY.312.BDV

Mattress 200 x 200 cm

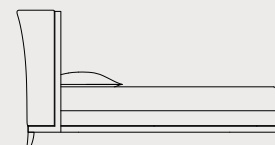
Bed frame in multilayer wood and variable thickness high density expansive polyurethane foam. Removable external upholstery in cat. A Nuuk leather col. 6 Frost. Base in solid beech wood finished with semi-gloss or matt dark wengé dye. Feet worked with a numeric control system. All of the upholstered parts are internally lined with resin coated polyester coupled with hypoallergenic white cotton canvas. Slatted base included for mattress 180 x 200 cm. Brass tag with certified "100% Made in Italy" serial number attached.

212 cm / 83 15/32 in



195 cm / 76 49/64 in

224 cm / 88 3/16 in

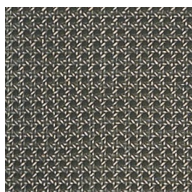


115 cm / 59 1/16 in

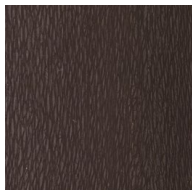
31 cm / 12 13/64 in

CARAL NIGHT TABLE

Nomadic spirit, travel suggestions and natural inspirations. This night table with matt Smoke Grey dyed cane and paisley handles in polished brass is a mix of references and suggestions in perfect ETRO Home Interiors style.



BRUSHED SMOKE GREY
DYED VIENNA STRAW
ON DARK WENGÉ DYED
SOLID WOOD



MATT DARK WENGÉ
DYED CARBALHO
VENEERED

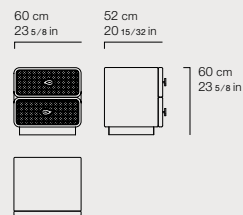


E.CAR.321.AHX

COMPOSITION

Night table with structure in curved multilayer wood covered with matt dark wengé dyed Carbalho veneer. Drawers in multilayer wood covered in microfibre. Front in brushed Smoke Grey dyed Vienna straw in a frame in solid beech wood, turned and worked with a numeric control system, finished with matt dark wengé dye. Closure piping in wicker in

same colour as Vienna straw. "Paisley" handles in polished cast brass. Back in multilayer wood covered in microfibre. Base in curved multilayer wood in brushed dark bronze lacquer (varnished with multilayer hand applied patina finishing). Brass tag with certified "100% Made in Italy" serial number attached.



LASA NIGHT TABLE

Functionality and elegance distinguish the night tables of the new Lasa line. The spatula finishing lacquered in a refined ivory tone characterizes structure, top and front of these pieces of furniture, enriched in the central part by a brushed dark bronze lacquered detail. The decorative Pegasus is linked to ETRO's historical identity.



BRUSHED DARK
BRONZE LACQUER



MATT IVORY LACQUER
WITH SPATULA
FINISHING



MATT IVORY LACQUER



E.LAS.321.AGX

COMPOSITION

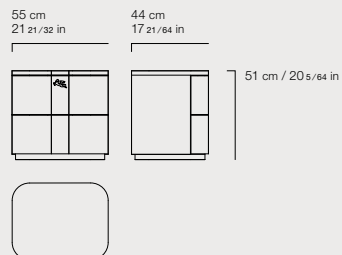
Night table with structure in multilayer wood finished in matt Ivory lacquer with spatula finishing.

Drawers with structure in multilayer wood covered in microfibre. Front in multilayer wood finished in matt Ivory lacquer with spatula finishing and central detail in brushed dark bronze lacquer (varnished with multilayer hand applied patina finishing).

Decorative Pegasus in laser cut brass laminate.

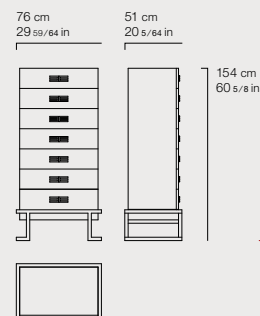
Base in matt Ivory lacquered multilayer wood.

Brass tag with certified "100% Made in Italy" serial number attached.



KOLKATA DRAWER UNIT

Kolkata is an evocative line of furniture that recalls the shape of the ancient chests used centuries ago in the namesake Indian city. In this new variant, the chest of drawers is upholstered in a delicate greige shade and embellished with brass handles and decorative details.

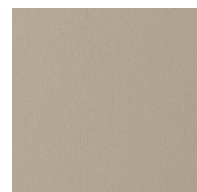


E.KOL.332.AAI

COMPOSITION

Drawer unit with base in brushed dark bronze iron (varnished with multilayer hand-applied patina finishing). Structure in multilayer wood covered in aniline leather cat. A Cuero in col. 2 Greige with decorative stitching. Drawers in multilayer wood covered in

microfibre. Front in multilayer wood covered in aniline leather cat. A Cuero in col. 2 Greige with decorative stitching. Double "E" handles in polished cast brass. Brass tag with certified "100% Made in Italy" serial number attached.



Aniline leather CUERO
col. 2 GREIGE
cat. A

LASA DRAWERS UNIT

Functionality and elegance distinguish the drawer unit of the new Lasa line. The spatula finishing lacquered in a refined ivory tone characterizes structure, top and front of the piece of furniture, enriched in the central part by the brushed dark bronze lacquered detail. The decorative Pegasus is linked to ETRO's historical identity.



BRUSHED DARK
BRONZE LACQUER



MATT IVORY LACQUER
WITH SPATULA
FINISHING



MATT IVORY LACQUER



E.LAS.331.AGX

COMPOSITION

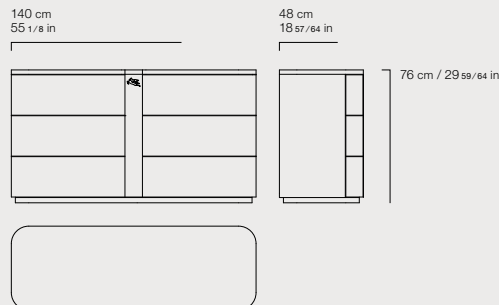
Drawer unit with structure in multilayer wood finished in matt Ivory lacquer with spatula finishing.

Drawers with structure in multilayer wood covered in microfibre. Front in multilayer wood finished in matt Ivory lacquer with spatula finishing and central detail in brushed dark bronze lacquer (varnished with multilayer hand applied patina finishing).

Decorative Pegasus in laser cut brass laminate.

Base in matt Ivory lacquered multilayer wood.

Brass tag with certified "100% Made in Italy" serial number attached.



KOLKATA DRESSING TABLE

Latest addition to the Kolkata line, sharing the same design of the base, the new dressing table is a decorative piece of furniture with a mirror with golden nails on the borders and greige leather upholstery.

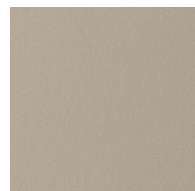
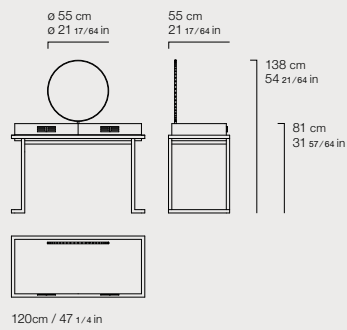


E.KOL.341.BAI

COMPOSITION

Dressing table with base in brushed dark bronze iron (varnished with multilayer hand-applied patina finishing). Top in multilayer wood covered in aniline leather cat. A Cuero in col. 2 Greige with decorative stitching. Drawers in multilayer wood covered in microfibre. Front in multilayer wood covered in aniline leather cat. A Cuero in col. 2 Greige with decorative stitching.

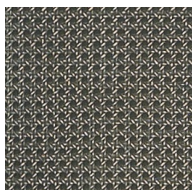
Double "E" handles in polished cast brass. Circular mirror on base of multilayer wood covered in aniline leather cat. A Cuero in col. 2 Greige and bordered with bronzed nailheads around the circumference. Fixed to the top with a rotating rod that guarantees flexible orientation. Brass tag with certified "100% Made in Italy" serial number attached.



Aniline leather CUERO
col. 2 GREIGE
cat. A

TIMGAD SCREEN

From the name that evokes the splendor of an ancient Algerian city, to the fabrics that tell wonderful intertwining of places and stories, the Timgad screen is a piece of furniture full of inspirations. The panels have dark wengé-stained wooden frames, with Vienna straw in shades of gray on the sides, with Leroy gray fabric in the middle. The screen is equipped with a mirror and embellished with polished brass details.



BRUSHED SMOKE GREY
DYED VIENNA STRAW
ON DARK WENGÉ DYED
SOLID WOOD



Linen NOLI
col. 3 GREIGE
cat. A



Printed fabric LEROY
col. 2 GREIGE
cat. B

E.TIM.551.AEX

COMPOSITION

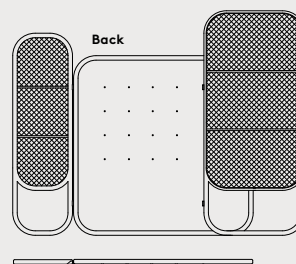
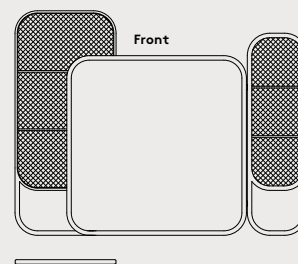
Screen with side panels in brushed Smoke Grey Vienna straw attached to the solid beech wood structure, turned and worked with a numeric control system, finished with matt dark wengé dye. Closure piping in wicker in same colour as Vienna straw. Central panel in printed fabric cat. B Leroy col. 2 Greige and frame in linen cat. A Noli col. 3 Greige attached to the structure in solid beech wood, turned and worked with a numeric control system, finished with matt dark wengé dye. Closure piping in linen cat. A Noli col. 3 Greige. Back of central panel customisable with

detachable accessory elements, attached to the structure through an interlocking system. Brass tag with certified "100% Made in Italy" serial number attached.

Available accessories include:

- Natural bevelled 40 x 40 cm mirror on multilayer wood support finished with matt dark wengé dye.
- "Monkey" hanger in polished cast brass.
- Shelf with solid beech wood structure finished with matt dark wengé dye and tray in polished brass.

265 cm / 104 21/64 in



200 cm
78 47/64 in

10 cm
3 15/16 in

95 cm
37 13/32 in

Monkey hanger



Mirror

40 cm
15 3/4 in



40 cm
15 3/4 in

Shelf

44 cm
17 21/64 in



20 cm
7 7/8 in

WOODSTOCK BENCH

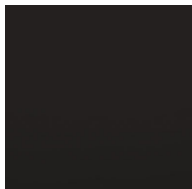
"A Thousand and One Nights" atmosphere for the Woodstock bench. The base in matt dark wengé dyed wood with an ethnic flair is combined with the champagne-coloured fabric with a delicate ivory tone piping creating an elegant, sophisticated and eclectic set.



Jacquard fabric DECCAN
col. 2 CHAMPAGNE
cat. A



Linen NOLI
col. 4 IVORY
cat. A



SEMI-GLOSS DARK
WENGÉ DYED WOOD

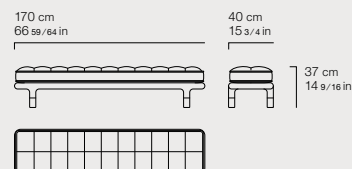


E.WOO.561.ADX

COMPOSITION

Bench with structure in solid beech wood, turned and worked with a numeric control system, finished with semi-gloss dark wengé dye. Tips in polished brass. Under seat frame in iron with elastic straps that guarantee springiness. Seat in variable thickness high density expansive polyurethane foam, quilted

with buttons on the surface and covered with resin coated polyester coupled with hypoallergenic white cotton canvas. Removable external upholstery in jacquard fabric cat. A Deccan col. 2 Champagne. Mattress style piping in linen cat. A Noli col. 4 Ivory. Brass tag with certified "100% Made in Italy" serial number attached.



CEYLON BENCH

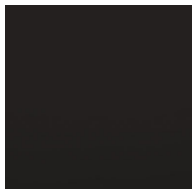
Refined and versatile, the bench completes and enriches the furnishings of the Ceylon line. The base is upholstered in nubuck leather in the delicate Frost shade, while the seat is enhanced by the jacquard fabric in a light green color. A combination of materials that expresses the most delicate and sophisticated soul of the ETRO Home Interiors collection.



Jacquard fabric ZULU
col. 4 TEA
cat. A



Nubuck leather NUUK
col. 6 FROST
cat. A



MATT DARK WENGÉ
DYED WOOD



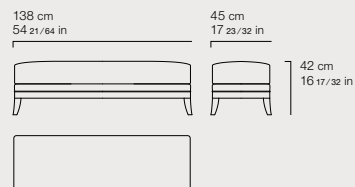
E.CEY.222.BAV

COMPOSITION

Bench with base in solid beech wood finished with semi-gloss or matt dark wengé dye. Feet worked with a numeric control system.

Under seat frame in multilayer wood with elastic straps that guarantee springiness. Upholstery in cat. A Nuuk leather col. 6 Frost.

Seat in variable thickness high density expansive polyurethane foam covered with resin coated polyester coupled with hypoallergenic white cotton canvas. Removable external upholstery and piping in cat. A Zulu jacquard fabric col. 4 Tea. Brass tag with certified "100% Made in Italy" serial number attached.

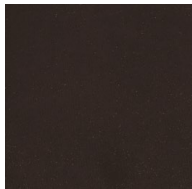


SAMARCANDA POUF

A piece of furniture imbued with ethnic suggestions and exotic inspirations, the Samarcanda pouf has a polished brass base and is upholstered in velvet and Greyton fabric in a new tone-on-tone colour palette in the shades of brown.



Jacquard fabric
GREYTON col. 3 BROWN
cat. B



Velvet VENEZIA
col. 17 MOKA
cat. A

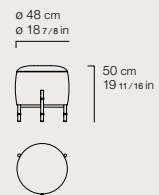


E.SAM.222.BEX

COMPOSITION

Pouf with structure in multilayer wood and variable thickness high density expansive polyurethane foam covered with resin coated polyester coupled with hypoallergenic white cotton canvas. Base in polished brass with feet shaped like bamboo canes obtained through

handcrafted hot working metal process. Seat upholstered in velvet cat. A Venezia col. 17 Moka with same colour piping. Side upholstery in jacquard fabric cat. B Greyton col. 3 Brown. Brass tag with certified "100% Made in Italy" serial number attached.

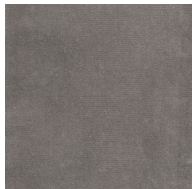


MERIAM POUF

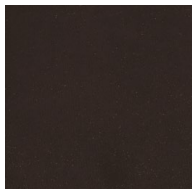
A decorative piece of furniture with exotic suggestions, Meriam pouf is presented with a new Bukhara fabric upholstery with neutral tones and contrasting ethnic designs. The pouf is embellished with golden decorative studs on the bottom and a fluted gold lacquered base.



Jacquard fabric
BUKHARA col. 2 SMOKE
cat. A



Velvet VENEZIA
col. 18 SMOKE
cat. A



Velvet VENEZIA
col. 17 MOKA
cat. A



E.MEI.222.ADV

COMPOSITION

Pouf with multilayer wood and variable thickness high density expansive polyurethane foam covered with resin coated polyester coupled with hypoallergenic white cotton canvas. External seat cover in cat. A Bukhara jacquard fabric col. 2 Smoke. External side cover in cat. A Venezia velvet col. 18

Smoke. Piping in cat. A Venezia velvet col. 17 Moka. Gold colour decorative studs on bottom. Base in grooved MDF with numeric control system with and gold lacquer finishing. Brass tag with certified "100% Made in Italy" serial number attached.

ø 50 cm
ø 19 11/16 in

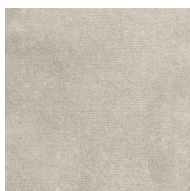


45 cm
17 23/32 in

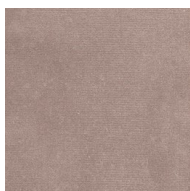


MERIAM POUF

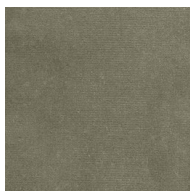
A decorative piece of furniture with exotic suggestions, Meriam pouf is presented with a new velvet upholstery with pastel tones. The pouf is embellished with golden decorative studs and a fluted gold lacquered base.



Velvet GENOVA
col. 1 RICE
cat. A



Velvet GENOVA
col. 3 LOTUS
cat. A



Velvet GENOVA
col. 2 SAGE
cat. A

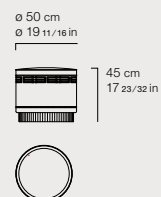


E.MEI.222.ADX

COMPOSITION

Pouf with structure in multilayer wood and variable thickness high density expansive polyurethane foam covered with resin coated polyester coupled with hypoallergenic white cotton canvas. Seat upholstery in cat. A Genova velvet col. 3 Lotus. External side upholstery in cat. A Genova velvet col. 2 Sage. Piping

in cat. A Genova velvet col. 1 Rice. Decoration with ETRO motif with golden nails. Golden decorative nailheads on bottom. Base in grooved MDF with numeric control system with gold lacquer finishing. Brass tag with certified "100% Made in Italy" serial number attached.



MERIAM POUF

A decorative piece of furniture with exotic suggestions, Meriam pouf is presented with seat upholstery in Selva printed fabric and embellished with golden studs and a fluted gold lacquered base. In this new version the pouf is also a precious storage element that can be opened by lifting the seat cushion.



Printed fabric SELVA
col. 1 CHAMPAGNE
cat. A



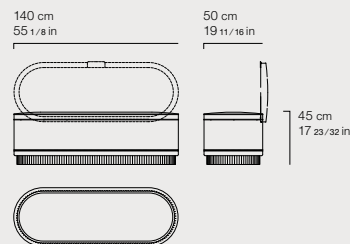
Velvet VENEZIA
col. 21 TEAL
cat. A

E.MEI.562.ADX

COMPOSITION

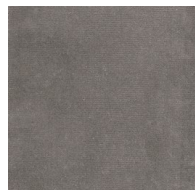
Pouf with storage openable by lifting the seat cushion. Structure in multilayer wood and variable thickness high density expansive polyurethane foam covered with resin coated polyester coupled with hypoallergenic white cotton canvas. External and internal upholstery of the structure in cat. A Venezia velvet col.

21 Teal. Seat upholstery in cat. A Selva printed fabric col. 1 Champagne and piping in cat. A Venezia velvet col. 21 Teal. Golden decorative nailheads on bottom. Handle in polished brass. Base in grooved MDF with numeric control system with gold lacquer finishing. Brass tag with certified "100% Made in Italy" serial number attached.

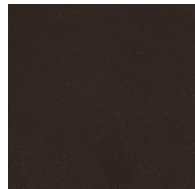


WOODSTOCK DAYBED

Perfect for separating two rooms or to create a comfortable chill-out corner in the living room or bedroom, Woodstock daybed, with its atmosphere imbued with Arabian suggestions, is upholstered with velvets in contrasting colour and matching silk tassels.



Velvet VENEZIA
col. 18 SMOKE
cat. A



Velvet VENEZIA
col. 17 MOKA
cat. A



SEMI-GLOSS DARK
WENGÉ DYED WOOD



E.WOO.225.ADX

L 237 cm

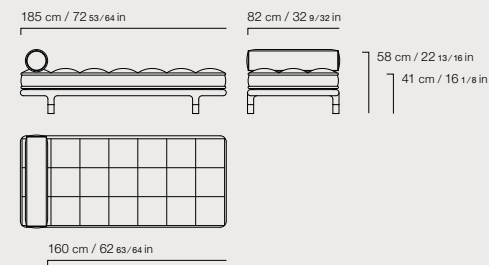
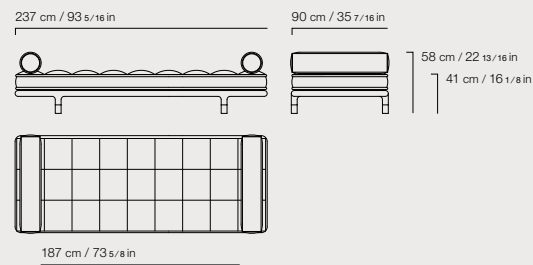
COMPOSITION

Daybed with structure in solid beech wood, turned and worked with a numeric control system, finished with semi-gloss dark wengé dye. Tips in polished brass. Under seat frame in iron with elastic straps that guarantee springiness. Seat in variable thickness high density expansive polyurethane foam quilted with surface buttons. External upholstery in velvet cat. A Venezia col. 18 Smoke. Mattress style piping in velvet cat. A Venezia col. 17 Moka. Roll cushions in variable thickness high density expansive polyurethane foam with

E.WOO.225.BDX

L 185 cm

internal structure in metal attached to the under seat frame with a screw and bolt system. External upholstery in velvet cat. A Venezia col. 17 Moka. Contrasting piping in velvet cat. A Venezia col. 18 Smoke. Double layer decorative tassels in silk in colours matching with upholstery fabric. All of the upholstered parts are internally lined with resin coated polyester coupled with hypoallergenic white cotton canvas. With prior disassembly of the roll cushions, all sofa parts have removable covers. Brass tag with certified "100% Made in Italy" serial number attached.



WOODSTOCK "MOUNTAIN" 4-SEATER SOFA

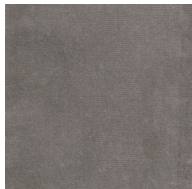
In the Woodstock sofa, the ethnic-inspired mattress conformation recalls the atmosphere of "A thousand and one nights", steeped in Ottoman and North African traditions. Dressed in the iconic fabric with "Mountain" print in a new colour variant, with a beige base and dark motifs reminiscent of gypsy designs, the sofa is characterized by a base in dark wengé dyed wood with tips and details in polished brass



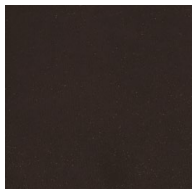
Printed fabric
MOUNTAIN
col. 3 BASE BEIGE
cat. A



Printed fabric
MOUNTAIN ROLL
col. 3 BASE BEIGE
cat. A



Velvet **VENEZIA**
col. 18 SMOKE
cat. A



Velvet **VENEZIA**
col. 17 MOKA
cat. A



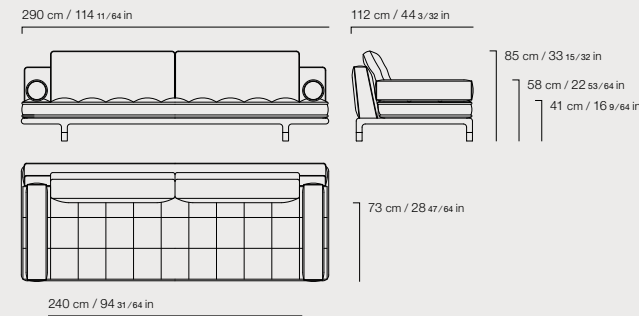
E.WOO.211.ADX

COMPOSITION

4-seater sofa with base in solid beech wood, turned and worked with a numeric control system, finished with matt dark wengé dye. Tips in polished brass. Under seat frame in iron with elastic straps that guarantee springiness. Seat in variable thickness high density expansive polyurethane foam quilted with surface buttons. External upholstery in placed printed fabric cat. A Mountain col. 3 Base Beige. Mattress style piping in velvet cat. A Venezia col. 17 Moka. Roll cushions in variable thickness high density expansive polyurethane foam with internal structure in metal attached to

the under seat frame with a screw and bolt system. External upholstery in printed fabric cat. A Mountain Roll col. 3 Base Beige. Piping and edge with button in velvet cat. A Venezia col. 17 Moka. Double layer decorative tassels in silk in colours matching with upholstery fabric. Back with structure in multilayer wood covered with variable thickness high density expansive polyurethane foam attached to the base of the underseat frame. External upholstery in velvet cat. A Venezia col. 18 Smoke with same colour piping. Back cushions in goose down. External upholstery in placed printed fabric cat. A

Mountain col. 3 Base Beige. Piping and edge in velvet cat. A Venezia col. 17 Moka. 4 decorative cushions in goose down are included. External upholstery in printed fabric cat. A Mountain Roll col. 3 Base Beige and piping in velvet cat. A Venezia col. 17 Moka. All of the upholstered parts are internally lined with resin coated polyester coupled with hypoallergenic white cotton canvas. With prior disassembly of the roll cushions, all sofa parts except for the back have removable covers. Brass tag with certified "100% Made in Italy" serial number attached.

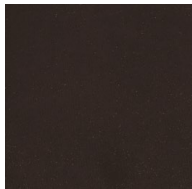


MASAI ARMCHAIR

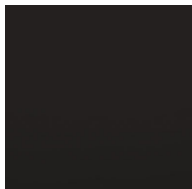
An iconic piece of the ETRO Home Interiors line, the Masai armchair represents a tribute to Africa, a continent recalled both in the shape and in the detail of the bronzed metal rings, similar to the jewelry of the African populations. In this new version it is made of Greyton linen, with tone-on-tone paisley in shades of brown.



Jacquard fabric
GREYTON col. 3 BROWN
cat. B



Velvet VENEZIA
col. 17 MOKA
cat. A



MATT DARK WENGÉ
DYED WOOD

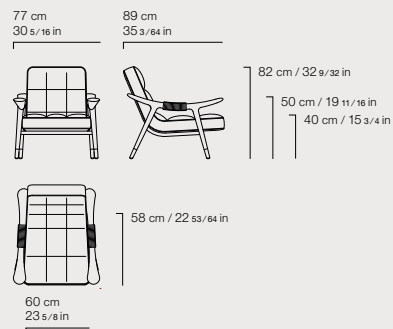


E.MAA.221.AEX

COMPOSITION

Armchair with structure in solid beech wood, turned and worked with a numeric control system, finished with matt dark wengé dye. Feet in polished brass. Rings ornament fixed on armrests composed of two pieces fitted together in polished cast brass. Seat in curved multilayer wood and variable thickness high density expansive

polyurethane foam covered with resin coated polyester coupled with hypoallergenic white cotton canvas. Main external upholstery in jacquard fabric cat. B Greyton col. 3 Brown. Lateral bands and piping in velvet cat. A Venezia col. 17 Moka. Brass tag with certified "100% Made in Italy" serial number attached.



CARAL ARMCHAIR

Nomadic spirit and travel suggestions for the Caral armchair. The back frame is realized in matt dark wengé dyed wood with matt Smoke Grey dyed cane, a new and delicate shade of gray while the upholstery is in Bukhara fabric, whose neutral tones contrast with the darker ethnic theme of the typical Persian "Suzani" pattern.

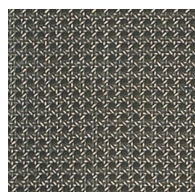
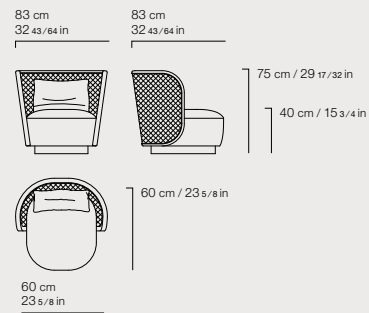


E.CAR.221.ADX

COMPOSITION

Armchair with backrest in brushed matt Smoke Grey Vienna straw in a frame in solid beech wood, turned and worked with a numeric control system, finished with matt dark wengé dye. Closure piping in wicker in same colour as Vienna straw. Seat in multilayer wood and variable thickness high density expansive polyurethane foam. External upholstery in jacquard fabric cat. A Bukhara col. 2 Smoke and contrasting piping in velvet cat. A Venezia col. 17 Moka. Goose feather back cushion.

Removable upholstery in velvet cat. A Venezia col. 17 Moka with same colour piping. All of the upholstered parts are internally lined with resin coated polyester coupled with hypoallergenic white cotton canvas. Base in curved multilayer wood in brushed dark bronze lacquer (varnished with multilayer hand applied patina finishing). Brass tag with certified "100% Made in Italy" serial number attached.



BRUSHED SMOKE GREY
DYED VIENNA STRAW
ON DARK WENGÉ DYED
SOLID WOOD



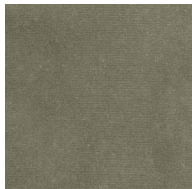
Jacquard fabric
BUKHARA col. 2 SMOKE
cat. A

DIANA ARMCHAIR

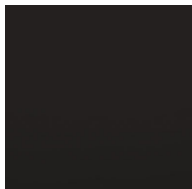
Elegant, enveloping and comfortable, the Diana armchair celebrates the eclectic and versatile soul of the ETRO Home Interiors line. The vintage structure with a 50s inspired design is made of solid wood in dark wengé colour and is enhanced by the Paisley fabric, presented in a new light shade with a hint of pastel green that fits perfectly in a relaxed living space.



Jacquard fabric ZULU
col. 4 TEA
cat. A



Velvet GENOVA
col. 2 SAGE
cat. A



MATT DARK WENGÉ
DYED WOOD

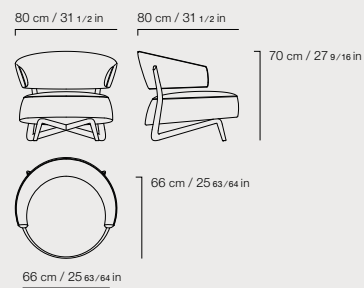


E.DIA.228.ADX

COMPOSITION

Armchair with structure in solid beech wood, turned and worked with a numeric control system, finished with semi-gloss or matt dark wengé dye. Seat in multilayer wood and variable thickness high density expansive polyurethane foam covered with hypoallergenic white cotton canvas. Back in curved multilayer wood and

variable thickness high density expansive polyurethane foam covered with resin coated polyester coupled with hypoallergenic white cotton canvas. External upholstery in cat. A Zulu jacquard fabric col. 4 Tea and piping in cat. A Genova velvet col. 2 Sage. Brass tag with certified "100% Made in Italy" serial number attached.

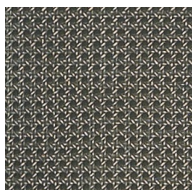


HAMAR CHAIR

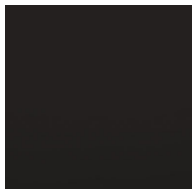
In the Hamar chair, the ethnic and natural inspiration of the Vienna straw is declined in a new shade of gray, in line with the soft and refined mood of the collection. The African suggestions are found in the matt dark wengé dyed wood structure and in the polished brass rings, reminiscent of the jewels of African tribes.



Velvet FLAG
col. 3 TAUPE
cat. A



BRUSHED SMOKE GREY
DYED VIENNA STRAW
ON DARK WENGÉ DYED
SOLID WOOD



MATT DARK WENGÉ
DYED WOOD

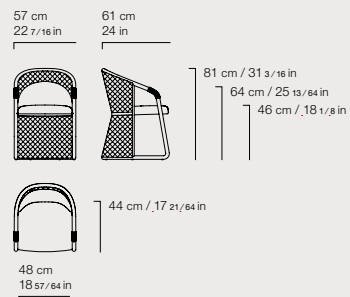


E.HAM.131.ADX

COMPOSITION

Chair with structure in solid beech wood, turned and worked with a numeric control system, finished with matt dark wengé dye. Brushed Smoke Grey Vienna straw attached to the structure. Closure piping in wicker in same colour as Vienna straw. Rings ornament of fixed on armrests composed of two pieces fitted together in polished cast brass. Seat in multilayer wood and variable thickness high density expansive

polyurethane foam. External upholstery in devoré velvet cat. A Flag col. 3 Taupe. Back cushion in variable thickness high density expansive polyurethane foam. Removable external upholstery in devoré velvet cat. A Flag col. 3 Taupe. All of the upholstered parts are internally lined with resin coated polyester coupled with hypoallergenic white cotton canvas. Brass tag with certified "100% Made in Italy" serial number attached.



AKBAR DESK

Institutional tones and rigorous lines for the first desk of ETRO Home Interiors. Protagonist of the office area, Akbar is enriched by the presence of archetypical elements such as the iconic fabric with paisley design, representative of ETRO leather goods, which upholsters drawers and storage compartments.



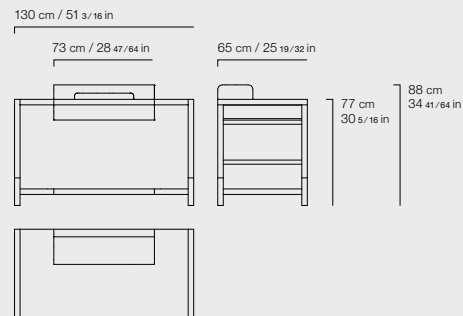
E.AKB.411.BAX + E.AKB.813.BEX

COMPOSITION

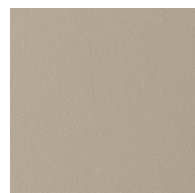
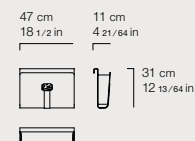
Desk with structure in solid beech wood finished with matt dark wengé dye with feet and side rails in brushed dark bronze aluminium (varnished with multilayer hand-applied patina finishing). Desktop in multilayer wood covered with aniline leather cat. A Cuero col. 2 Greige with decorative stitching. Drawer in multilayer wood completely covered in microfibre. Front panel and closure on back panel in multilayer wood in coated fabric cat. B Arnica col. 19 Cuoio. Storage compartment on top in solid beech wood

finished with semi-gloss dark wengé dye. Internal compartment in multilayer wood covered in microfibre. Opening front panel in curved multilayer wood covered in coated fabric cat. B Arnica col. 19 Cuoio. Brass tag with certified "100% Made in Italy" serial number attached.

Optional detachable side bag in bent metal covered in coated fabric cat. B Arnica col. 19 Cuoio with central application in leather cat. A Cuir col. 2 Chestnut and brass Pegasus buckle.



Side bag



Aniline leather CUERO
col. 2 GREIGE
cat. A



Coated fabric ARNICA
col. 19 CUOIO
cat. B

SAMARCANDA CENTRAL TABLE

Aesthetics, functionality and elegance come together in the Samarcanda coffee table. This evocative piece of furniture features an ethnic- inspired top in matt dark wengé dyed Carbalho wood and a polished brass base made up of an intertwining of bamboo canes, a natural element that is transformed into a precious material, lighting up to the environment.



E.SAM.231.AGX

COMPOSITION

Central table with base in polished brass with feet shaped like bamboo canes obtained through handcrafted hot working metal process.

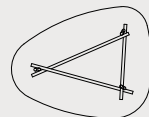
Top in multilayer wood covered with matt dark wengé dyed Carbalho veneer fixed to the base.

Brass tag with certified "100% Made in Italy" serial number attached.

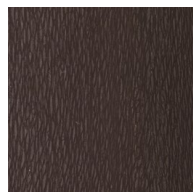
125 cm / 49 7/32 in



30 cm / 11 13/16 in



100 cm / 39 3/8 in



**MATT DARK WENGÉ
DYED CARBALHO
VENEERED**

SAMARCANDA SIDE TABLE

Aesthetics, functionality and elegance come together in the Samarcanda side table. This evocative piece of furniture features an elegant grey onyx top and a polished brass base made up of an intertwining of bamboo canes, a natural element that is transformed into a precious material, lighting up to the environment.



E.SAM.232.AXX

COMPOSITION

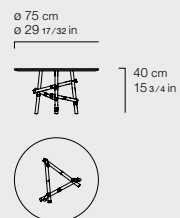
Side table with base in polished brass with feet shaped like bamboo canes obtained through handcrafted hot working metal process.
Top in polished Cloudy Grey Onyx fixed to the base.
Brass tag with certified "100% Made in Italy" serial number attached.



E.SAM.232.AKX

COMPOSITION

Side table with base in polished brass with feet shaped like bamboo canes obtained through handcrafted hot working metal process.
Top in polished marble cat. A Eramosa (vein cut) fixed to the base.
Brass tag with certified "100% Made in Italy" serial number attached.



SAMARCANDA SIDE TABLE

Aesthetics, functionality and elegance come together in the Samarcanda side table. This evocative piece of furniture features an elegant grey onyx top and a polished brass base made up of an intertwining of bamboo canes, a natural element that is transformed into a precious material, lighting up to the environment.



E.SAM.232.BXX

COMPOSITION

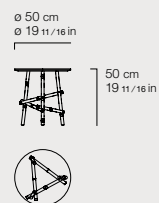
Side table with base in polished brass with feet shaped like bamboo canes obtained through handcrafted hot working metal process.
Top in polished Cloudy Grey Onyx fixed to the base.
Brass tag with certified "100% Made in Italy" serial number attached.



E.SAM.232.BKX

COMPOSITION

Side table with base in polished brass with feet shaped like bamboo canes obtained through handcrafted hot working metal process.
Top in polished marble cat. A Eramosa (vein cut) fixed to the base.
Brass tag with certified "100% Made in Italy" serial number attached.



RENÉ STANDING MIRROR

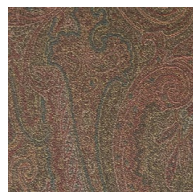
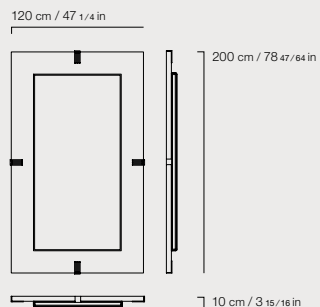
René is an elegant mirror upholstered in fabric with paisley design. The unprecedented combination between the warmth of the fabrics and the refinement of the details in bronzed brass contributes to express the eclectic and multifaceted spirit of the brand.



E.RE2.512.AEX

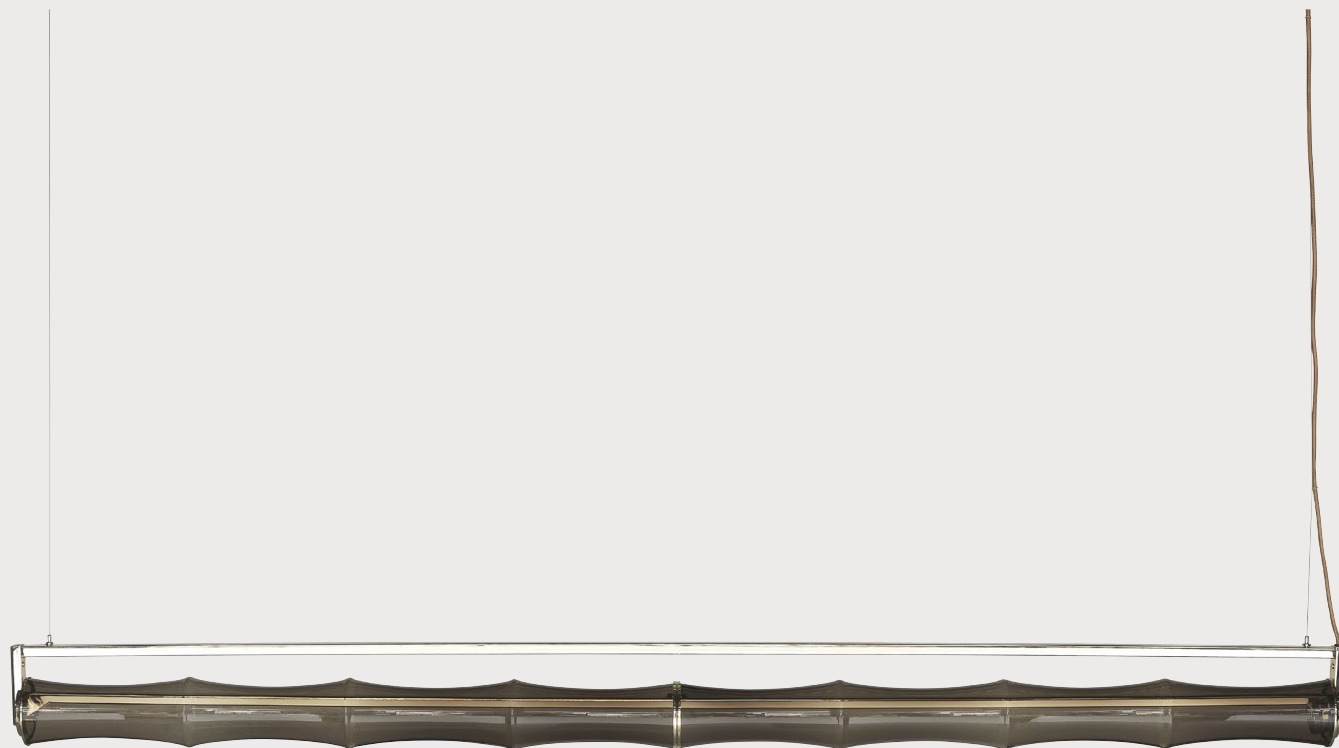
COMPOSITION

Structure in multilayer wood with back covered in logo print canvas.
External cover in coated fabric cat. B Arnica col. 19 Cuoio with detail in brushed dark bronze brass (varnished with multilayer hand-applied patina finishing).
Natural bevelled mirror, at the centre.
Brass tag with certified "100% Made in Italy" serial number attached.



Coated fabric ARNICA
col. 19 CUOIO
cat. B

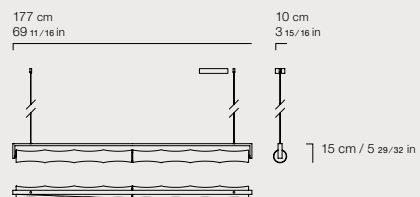
KYOTO SUSPENSION LAMP



E.KYO.611.CMX

COMPOSITION

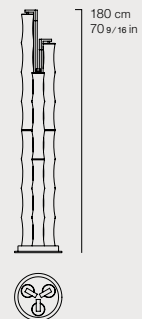
"Suspension lamp system with strip LED 17,3W - 24V - 29W - 3300lm - 3000K. Shades shaped like bamboo canes in transparent bronze glass on a metal structure with glossy gold finishing. Cables in gold fabric. Ceiling mounted power supply in metal box with glossy gold finishing. Suspension from ceiling in steel cables at the end of the lamp. Brass tag with certified "100% Made in Italy" serial number attached."



KYOTO FLOOR LAMP



ø 35 cm
ø 13 3/4 in



E.KYO.621.AMX

COMPOSITION

Floor lamp with 3-light system, all with strip LED 17,3W - 24V - 77W - 8661lm - 3000K. Shades shaped like bamboo canes in transparent bronze glass on a metal structure with glossy gold finishing. Cables in gold fabric. Brass tag with certified "100% Made in Italy" serial number attached.



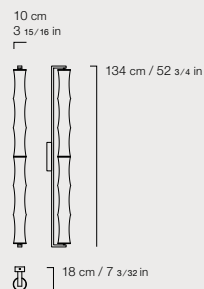
KYOTO WALL LAMP



E.KYO.641.AMX

COMPOSITION

Wall lamp system with strip LED 17,3W - 24V - 22W - 2475lm - 3000K.
Shades shaped like bamboo canes in transparent bronze glass on a metal structure with glossy gold finishing.
Wall mounted power supply in metal box with glossy gold finishing.
Brass tag with certified "100% Made in Italy" serial number attached.



CHAGALL CHANDELIER

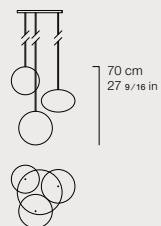


E.CHA.611.BMX

COMPOSITION

Lamp with 3 LED E27 light system.
Lampshades in transparent bronze blown glass with arabesque patterns.
Ceiling rose and metallic parts with glossy gold finishing.
Cables in bordeaux fabric.
Brass tag with certified "100% Made in Italy" serial number attached.

ø 60 cm
ø 23 5/8 in



POWDER



LILAC



E.PAP.591.AMX | **E.PAP.591.BMX**

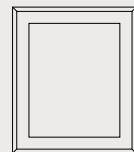
POWDER

LILAC

COMPOSITION

Floral print with motif inspired by vintage "papier peint" on jacquard paper.
Passe-partout in ivory cardboard.
Frame in solid wood with antique gold finishing and transparent closure in Crilex (synthetic glass) guaranteeing low weight and unbreakability.
Brass tag with certified "100% Made in Italy" serial number attached.

106 cm
41 47/64 in



126 cm
49 39/64 in

VARANASI RUG

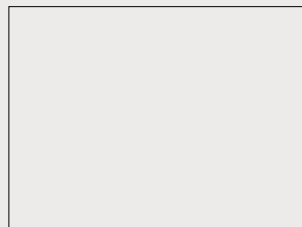


E.VAR.571.BMX

COMPOSITION

Rug in hand-tufted wool and viscose with Etro floral pattern.

400 cm / 157 3/4 in



300 cm / 118 7/8 in

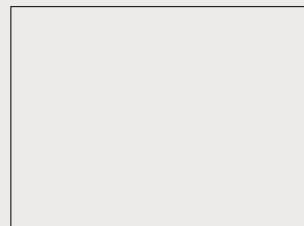


E.ARA.571.AMX

COMPOSITION

Rug in hand-tufted wool and bamboo silk with ETRO paisley motif on the border.

400 cm / 157 31/64 in



300 cm / 118 7/8 in

THE INTIMATE DINING



KLEE DINING TABLE

Sculptural shapes and a refined personality distinguish the Klee round dining table. The elegance given by the research on materials and the uniqueness of the craftsmanship combines with the iconic character of ETRO Home Interiors' stylistic elements. The base with hand-applied multilayer finishing takes up the characteristic "E" shape - a peculiarity of the Klee line - and is enriched by elements varnished in a warm Cherry Red shade. Scenic and refined, the structure dialogues harmoniously with the top in Carbalho dyed matte dark brown. The Lazy Susan in wood from the ETRO Home Interiors collection completes the table.



E.KLE.123.AGZ + E.COM.911.AGX

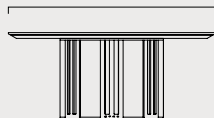
COMPOSITION

Round dining table with base in brushed dark bronze varnished aluminium (varnished with multilayer hand applied patina finishing). Varnish detail in Cherry Red. Top in multilayer wood covered with matt dark wengé dyed Carbalho veneer, with undermount in dark wengé dyed multilayer wood.

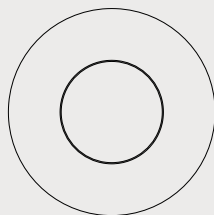
Lazy Susan (Ø 88 cm) in multilayer wood covered with matt dark wengé dyed Carbalho veneer.

Brass tag with certified "100% Made in Italy" serial number attached.

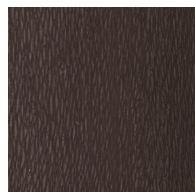
Ø 180 cm
Ø 70 55/64 in



75 cm
29 17/32 in



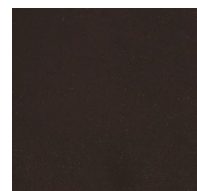
Ø 88 cm
Ø 34 41/64 in



**MATT DARK WENGÉ
DYED CARBALHO
VENEERED**

SEILA CHAIR

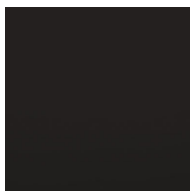
Seila is a chair with a soft and enveloping silhouette, in which the sophisticated and bohemian aesthetics of the ETRO world comes to life in a blend of exotic inspirations combined with the refinement of craftsmanship. The upholstery of the backrest in jacquard fabric of the ETRO Home Interiors line, lends the chair a typical exotic charm, while the velvet-covered seat and interior backrest add a soft and intriguing tactility. The light color palette, based on neutral tones, exudes an intimate and relaxed charm, in contrast with the solidity of the legs in solid beech wood with matt dark wengé finishing.



Velvet VENEZIA
col. 17 MOKA
cat. A



Jacquard fabric ZULU
col. 3 SAND
cat. A

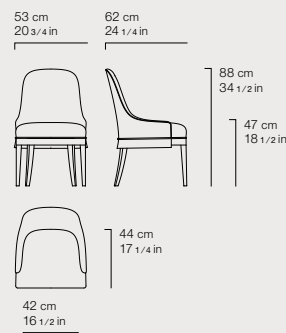


MATT DARK WENGÉ
DYED WOOD

E.SEI.131.ADX

COMPOSITION

Seat with structure in curved multilayer wood and variable thickness high density expansive polyurethane foam. Backrest upholstered in jacquard fabric cat. A Zulu col. 3 Sand. Seat and inner backrest upholstered in velvet cat. A Venezia col. 17 Moka. Belt with leather cord and closure in polished brass. Legs in solid beechwood with matt dark wengé dyed finishing. Brass tag with certified "100% Made in Italy" serial number attached.

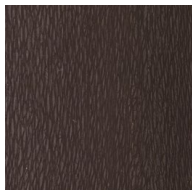


RAJAN SIDEBOARD

The sideboard of the new Rajan line is an ethnic-inspired piece of furniture characterized by essential lines emphasized by the contrast between the patinated bronze finishing and the Carbalho essence dyed matte dark brown. The interior, with drawers and shelf in bronzed glass, is upholstered with the iconic Deccan fabric with Paisley design in a new champagne-colored variant.



Jacquard fabric DECCAN
col. 2 CHAMPAGNE
cat. A



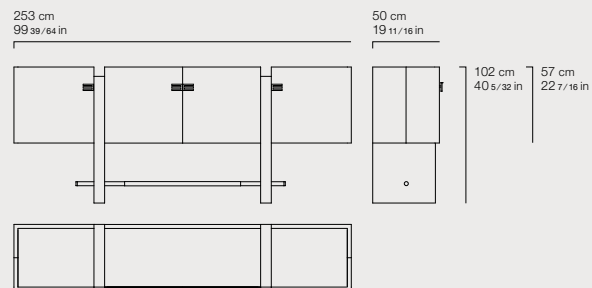
MATT DARK WENGÉ
DYED CARBALHO
VENEERED

E.RAJ.113.ADG

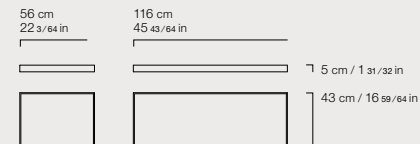
COMPOSITION

Sideboard with base in dark brushed bronze varnished iron (varnished with multilayer hand applied patina finishing). Side rail in polished brass with central insert in solid beechwood structure with matt dark wengé dyed finishing. Structure in multilayer wood covered with matt dark wengé dyed Carbalho veneer, top and door inserts in brushed dark bronze finishing (varnished with multilayer hand applied patina finishing).

Hinged doors and "E" handles in polished cast brass. Inner parts covered in jacquard fabric cat. A Deccan colour 2 Champagne, with intermediate shelf in bronzed glass in all compartments. Optional removable trays lacquered brushed dark bronze (varnished with multilayer hand applied patina finishing). Brass tag with certified "100% Made in Italy" serial number attached.

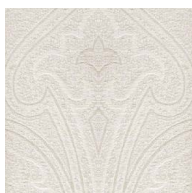


Removable trays



RAJAN CABINET

The bar cabinet of the new Rajan line is an ethnic-inspired piece of furniture characterized by essential lines emphasized by the contrast between the patinated bronze finishing and the Carbalho essence dyed matte dark brown. The interior, with drawers and shelf in bronzed glass, is upholstered with the iconic Deccan fabric with Paisley design in a new champagne-colored variant.



Jacquard fabric DECCAN
col. 2 CHAMPAGNE
cat. A



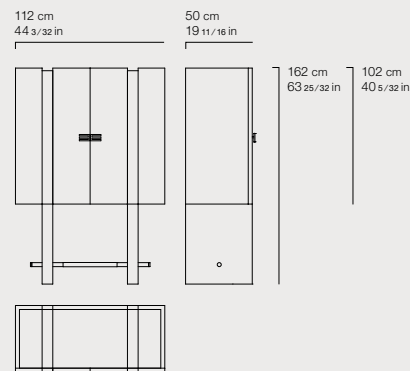
MATT DARK WENGÉ
DYED CARBALHO
VENEERED

E.RAJ.116.ADG

COMPOSITION

Bar cabinet with base in dark brushed bronze varnished iron (varnished with multilayer hand applied patina finishing). Side rail in polished brass with central insert in solid beechwood structure with matt dark wengé dyed finishing. Structure multilayer wood covered with matt dark wengé dyed Carbalho veneer, top and door inserts in brushed dark bronze varnish, with hand-applied

multilayer patina finishing. Folding doors. "E" handles in polished cast brass. Inner parts upholstered in jacquard fabric cat. A Deccan colour 2 Champagne, with two drawers and shelf in bronzed glass. Drawer's inner parts covered in microfibre. Knob in polished brass. Brass tag with certified "100% Made in Italy" serial number attached.



KOLKATA CABINET

An evocative piece of furniture that recalls the shape of an ancient chest, like those which were sorted in Kolkata, one of the primary commercial centres in India. The piece of furniture is presented with an upholstery with Leroy fabric in a new greige shade, in line with the intimate and delicate mood of the new collection.

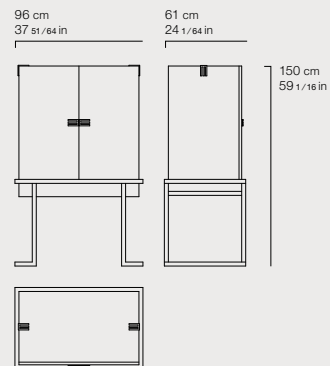


E.KOL.116.AEV

COMPOSITION

Cabinet with base in brushed dark bronze iron (varnished with multilayer hand applied patina finishing). Structure and doors in multilayer wood covered with print fabric cat. B Leroy col. 2 Greige. Inner parts lacquered in matching colour with external fabric covering and

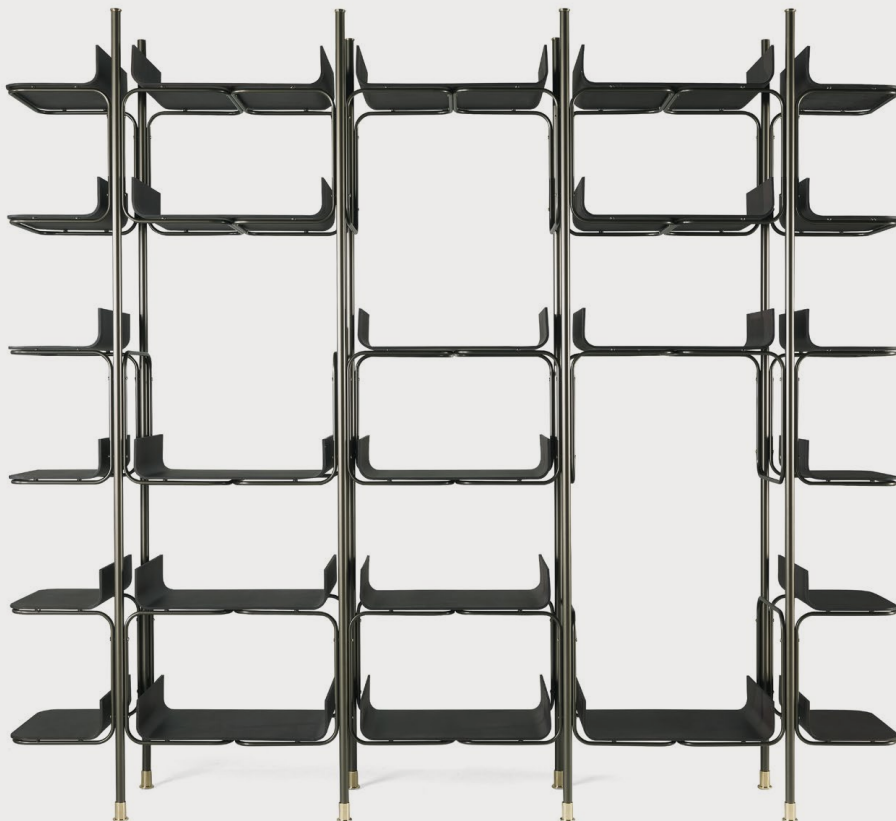
intermediate shelf in bronzed glass. "E" handles in polished cast brass. Double "E" elements applied at angles in brushed dark bronze brass (varnished with multilayer hand applied patina finishing). Brass tag with certified "100% Made in Italy" serial number attached.



Printed fabric LEROY
col. 2 Greige
cat. B

PALMIRA MODULAR BOOKCASE

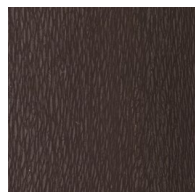
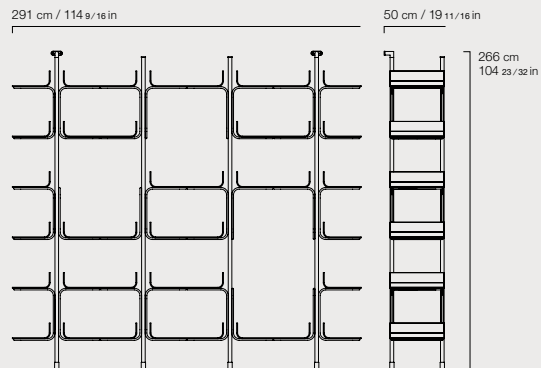
Bold and distinctive, the Palmira modular bookcase plays with the combination of the dark bronze and polished brass finishings of the vertical structure and the warmth of the Carbalho essence dyed matte dark brown that features the shelves to create a dynamic ensemble. The light structure and slender lines make it perfect as a dividing wall between rooms.



E.PAL.542.AIG

COMPOSITION

Modular bookcase with vertical supports in brushed dark bronze iron and adjustable mounting tips in polished brass. Horizontal modules in brushed dark bronze iron, in three types guaranteeing customised settings, assembled with golden screws. Removable shelves in curved multilayer wood covered with matt dark wengé dyed Carbalho veneer, attached to the structure by a magnetic system. Brass tag with certified "100% Made in Italy" serial number attached.



MATT DARK WENGÉ
DYED CARBALHO
VENEERED

KUSH ARMCHAIR

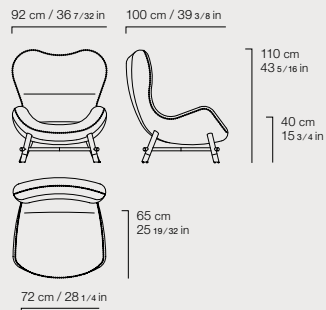
Charm and comfort come together in the Kush armchair. The piece of furniture is upholstered in printed shell nubuck leather with tone-on-tone Paisley print, a warm and enveloping material that emphasizes its soft shapes. The profiles are enhanced by gold studs, while the legs are illuminated by polished brass caps.



E.KUS.221.ADX

COMPOSITION

Armchair with multilayer wood structure covered in high density expansive polyurethane foam covered with resin coated polyester coupled with hypoallergenic white cotton canvas. External cover in leather cat. B printed Shell Nubuck col. 1 Dust. Border decorated with golden nails. Base with crossed legs in solid beechwood structure dyed in matt or semi-gloss dark wengé with feet and details in polished brass. Brass tag with certified "100% Made in Italy" serial number attached.



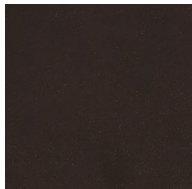
Printed nubuck leather
SHELL col. 1 DUST
cat. B

SAMARCANDA POUF

A piece of furniture imbued with ethnic suggestions and exotic inspirations, the Samarcanda pouf has a polished brass base and is upholstered in velvet and Greyton fabric in a new tone-on-tone colour palette in the shades of brown.



Jacquard fabric
GREYTON col. 3 BROWN
cat. B



Velvet VENEZIA
col. 17 MOKA
cat. A

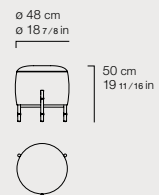


E.SAM.222.BEX

COMPOSITION

Pouf with structure in multilayer wood and variable thickness high density expansive polyurethane foam covered with resin coated polyester coupled with hypoallergenic white cotton canvas. Base in polished brass with feet shaped like bamboo canes obtained through

handcrafted hot working metal process. Seat upholstered in velvet cat. A Venezia col. 17 Moka with same colour piping. Side upholstery in jacquard fabric cat. B Greyton col. 3 Brown. Brass tag with certified "100% Made in Italy" serial number attached.



AMBAR SIDE TABLE

Sophisticated appeal and essential lines for the Ambar coffee tables. These functional pieces of furniture with strong aesthetic value are presented in new color variants top, whose elegant tones are coherent with the mood of the collection.



E.AMB.231.AXX

COMPOSITION

Side tables with base in polished brass. Top in Violet Onyx attached to the base. Brass tag with certified "100% Made in Italy" serial number attached.



E.AMB.231.BLX

COMPOSITION

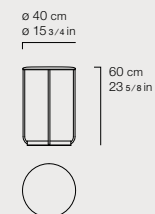
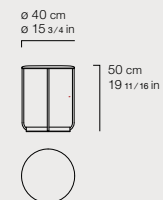
Side table with base in polished brass. Top in marble cat. B Irish Green attached to the base. Brass tag with certified "100% Made in Italy" serial number attached.



E.AMB.231.CXX

COMPOSITION

Side table with base in polished brass. Top in Cloudy Grey Onyx attached to the base. Brass tag with certified "100% Made in Italy" serial number attached.



DELFI STANDING MIRROR

Bamboo cane: an element of natural inspiration that becomes the main protagonist of an elegant and sophisticated mirror. Delfi is a fascinating element that integrates and enriches the living room or bedroom furniture with its exotic touch.



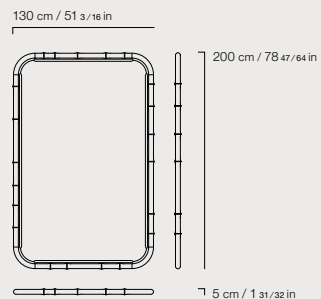
E.DEL.512.AMX

COMPOSITION

Floor-standing mirror with frame in bamboo-cane shaped brass obtained through handcrafted hot working metal process.

Natural bevelled mirror attached to a panel of multilayer wood with back covered in logo print canvas.

Brass tag with certified "100% Made in Italy" serial number attached.



MCKENZIE SUSPENSION LAMP

The McKenzie suspension lamp, with glass lampshades in a new amber shade, add a note in perfect "One Thousand and One Nights" style, accentuating the sensual and fairytale atmosphere of the interior design.



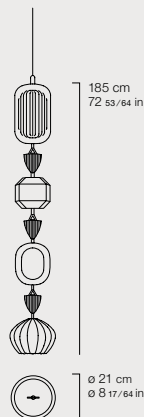
E.MCK.611.CMX

COMPOSITION

4 bulb suspension light with LED Strip 3000K 24V with transparent amber coloured glass shades.

Ceiling rose and metallic parts with polished light gold finishing.

Brass tag with certified "100% Made in Italy" serial number attached.



POWDER



LILAC



E.PAP.591.AMX | **E.PAP.591.BMX**

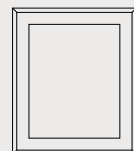
POWDER

LILAC

COMPOSITION

Floral print with motif inspired by vintage "papier peint" on jacquard paper.
Passe-partout in ivory cardboard.
Frame in solid wood with antique gold finishing and transparent closure in Crilex (synthetic glass) guaranteeing low weight and unbreakability.
Brass tag with certified "100% Made in Italy" serial number attached.

106 cm
41 47/64 in



126 cm
49 39/64 in

VARANASI RUG

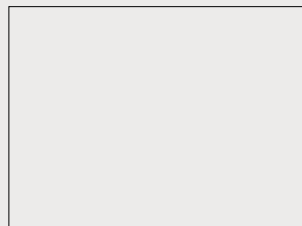


E.VAR.571.BMX

COMPOSITION

Rug in hand-tufted wool and bamboo silk
with Etró floral pattern.

400 cm / 157 31/64 in



300 cm / 118 7/64 in

ETRO HOME INTERIORS
An exclusive collection by ONIRO Group



Via Montesolaro 14b
22063 Cantù (CO)
Italy

+39 031 70757

info@onirogroup.it
etrohomeinteriors.onirogroup.it